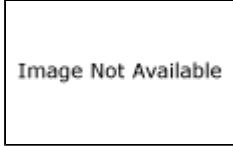




Home > Products > Product Page

### AML91LA85

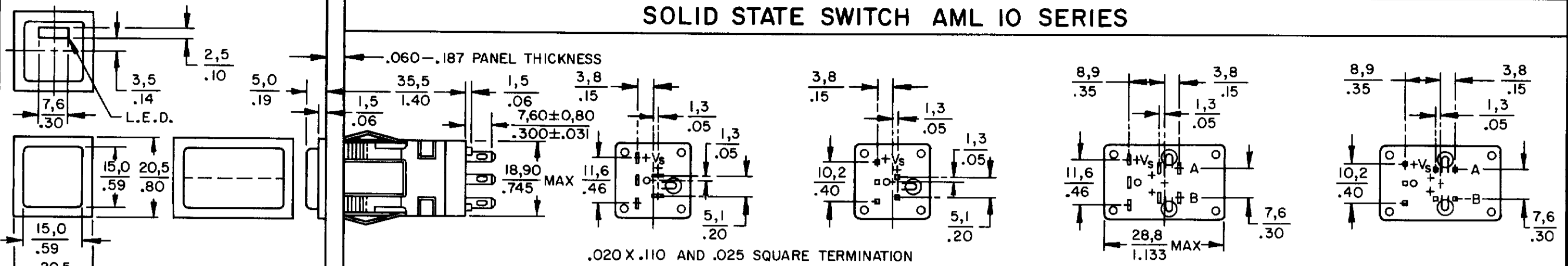


**AML91 Series Incandescent Lamp, 28 Volts**

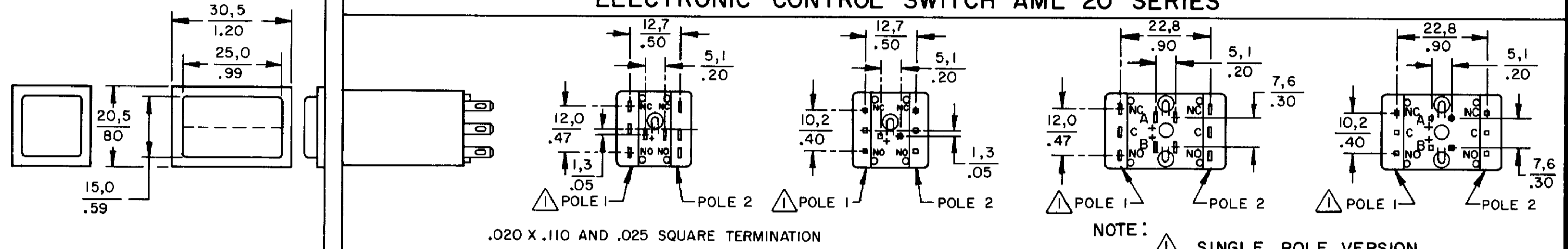
Product Specifications	
Product Type	AML Incandescent lamp
Used With Series	AML11, AML12, AML21, AML22, AML23, AML24, AML27, AML31, AML32, AML33, AML34, AML35, AML36, AML41, AML42, AML45
Voltage	28
Availability	Global

# AML PUSHBUTTON AND INDICATOR SERIES

## SOLID STATE SWITCH AML 10 SERIES

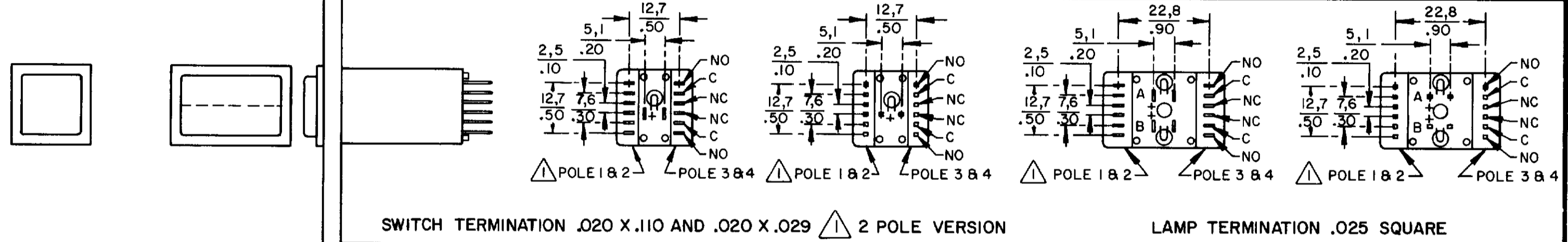


## ELECTRONIC CONTROL SWITCH AML 20 SERIES



NOTE: △ SINGLE POLE VERSION

.020 X .110 AND .025 SQUARE TERMINATION

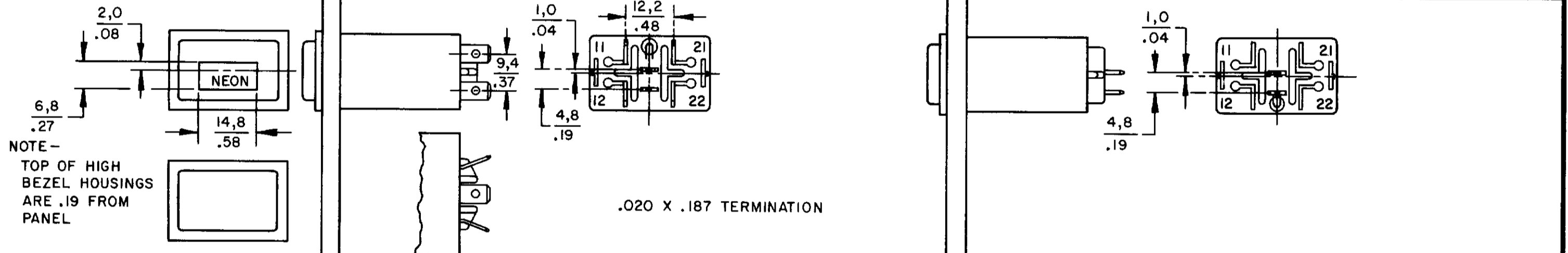


SWITCH TERMINATION .020 X .110 AND .020 X .029 △ 2 POLE VERSION

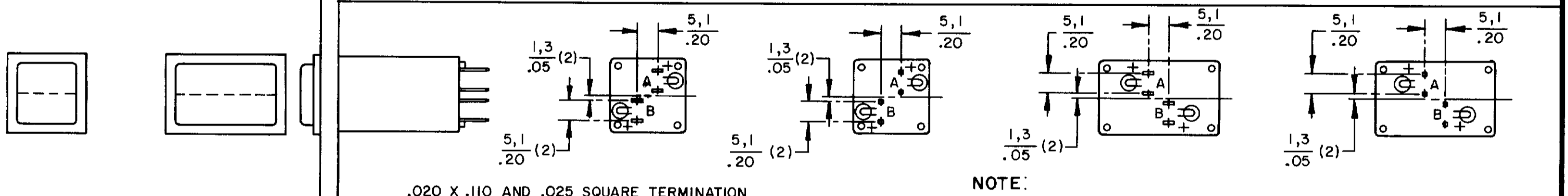
LAMP TERMINATION .025 SQUARE

## POWER SWITCH AML 30 SERIES

## LINE POWER IND AML 43 SERIES

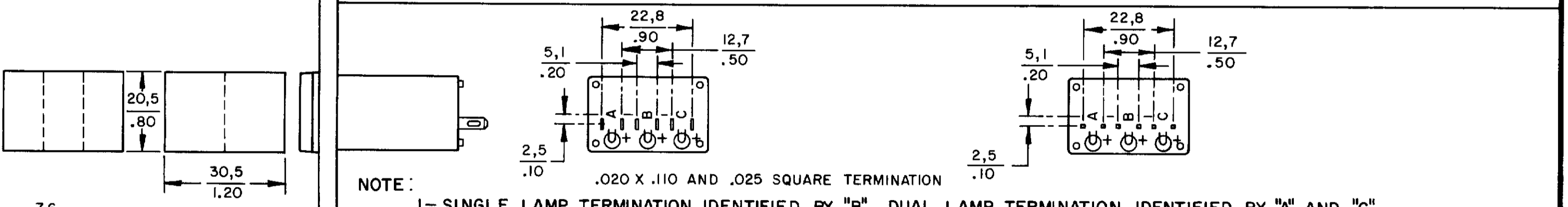


## INDICATORS AML 40 SERIES



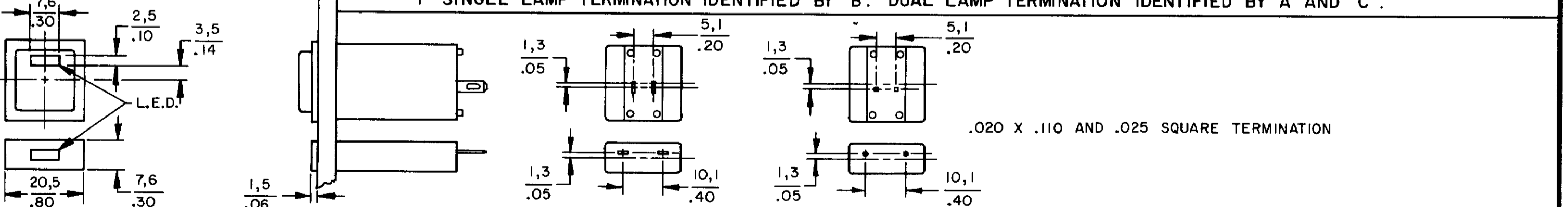
NOTE: I - SINGLE LAMP TERMINATION IDENTIFIED BY "A"

.020 X .110 AND .025 SQUARE TERMINATION



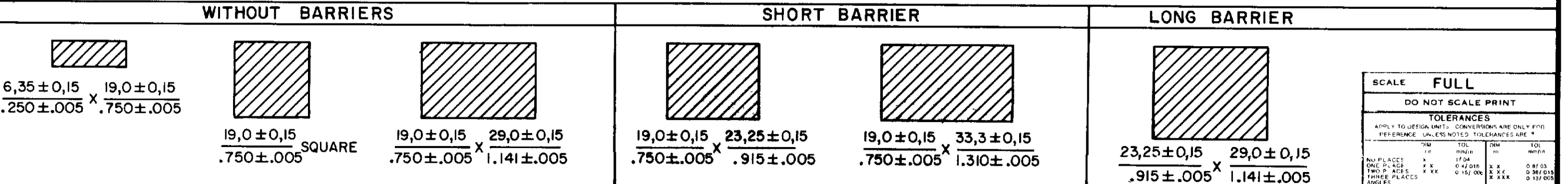
NOTE: I - SINGLE LAMP TERMINATION IDENTIFIED BY "B". DUAL LAMP TERMINATION IDENTIFIED BY "A" AND "C".

.020 X .110 AND .025 SQUARE TERMINATION



.020 X .110 AND .025 SQUARE TERMINATION

## PANEL CUTOUTS



SCALE FULL		
DO NOT SCALE PRINT		
TOLERANCES		
APPLY TO DESIGN UNITS. CONVERSIONS ARE ONLY FOR REFERENCE. UNLESS NOTED, TOLERANCES ARE:		
INCHES	MILLIMETERS	DECIMALS
FRACTIONS	FRACTIONS	FRACTIONS
ONE PLACE	TWO PLACES	TWO PLACES
TWO PLACES	THREE PLACES	TWO PLACES
ANGLES	ANGLES	ANGLES
DESIGN UNITS	DI METRIC	US CUSTOMARY
THIRD ANGLE PROJECTION		
WEIGHT		

RASTER  
 DRAWN  
 JAK 17 JUN 94  
 CHECK  
 JAF 11 JUL 94  
 CHECK  
 6  
 PAGE 1 OF 1  
 SERIES CHART 1  
 AMPL 10 20 30 40  
 REPLACES CO-78498  
 SERIES & 40 SERIES  
 RELEASE NO  
 CATALOG LISTING  
 ISSUE