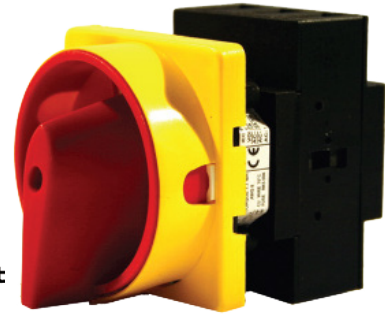


RS Part Number: **466150**
 Europa Part Number: **LBPM323P**
 Specifications and dimensions



- Back of door mounting load break switch
- Red/Yellow handle padlockable

Dimensions	
Back of panel switch:	
Height	87mm
Width	68mm
Depth	56mm
Handle:	
Height	64mm
Width	64mm
Depth	42mm
Weight	0.265Kg
Features	
Rated operational voltage Ue IEC &EN	690V
Rated operational voltage Ue UL	600V
Rated impulse withstand voltage Uimp	6kV
Rated uninterrupted current Iu	32A
Rated operational current Ie AC22A	32A
Rated operational current Ie AC21A	40A
Rated operational current Ie AC1	40A
Rated operational power AC23A (50/60Hz) 230V	15kW
Rated operational power AC23A (50/60Hz) 415V	18.5kW
Rated operational power AC23A (50/60Hz) 690V	22kW
Rated operational power AC3 (50/60Hz) 230V	11kW
Rated operational power AC3 (50/60Hz) 415V	11kW
Rated operational power AC3 (50/60Hz) 690V	15kW
UL power rating 3 phase DOL 110V	3hp
UL power rating 3 phase DOL 230V	7.5hp
UL power rating 3 phase DOL 480V	20hp
UL power rating 3 phase DOL 600V	25hp
UL power rating 1 phase DOL 110V	2hp
UL power rating 1 phase DOL 230V	3hp
UL short circuit fuse rating class J	45A
UL rated fused short circuit current	10kA
IEC short circuit capacity max fuse size GI	32A
IEC rated fused short circuit current	30kA
Maximum terminal capacity	10mm ²
Recommended tightening torque	1.7Nm
Related Products	
Extended main pole + 1NC/1NO auxilliary	LB263EFMC
Extended neutral + 1NC/1NO auxilliary	LB263EFNC
Neutral contact early make/late break	LB263AUXEMFM
Main pole contact	LB263MAINFM
Gasket to provide IP65 rating	LBGASKET

ⓘ ALL PRODUCTS, PRODUCT SPECIFICATIONS AND DATA ARE SUBJECT TO CHANGE WITHOUT NOTICE.

Information provided in data sheets and/or specifications may vary from actual results in different applications and performance may vary over time. **All products must be installed according to manufacturers instructions.**

Europa House, Airport Way, Luton, Beds, LU2 9NH Tel: 01582 692 440 / Fax: 01582 692 450 e-mail: sales@europacomponents.com
 website: <http://www.europacomponents.com>