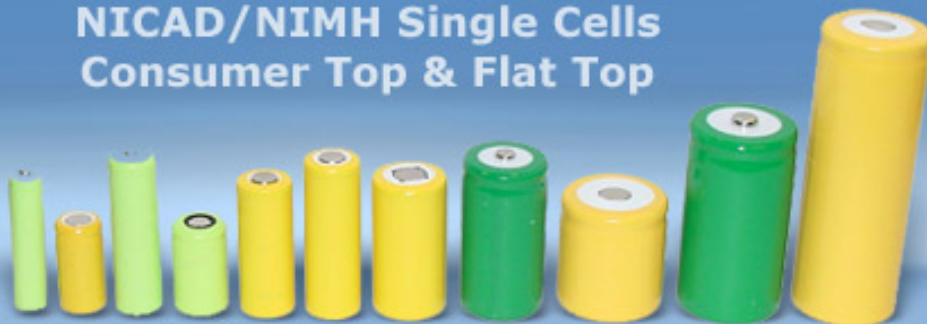


DANTONA
INDUSTRIES, INC.

For all your battery needs!

NICAD/NIMH Single Cells
Consumer Top & Flat Top



DANTONA PART SEARCH

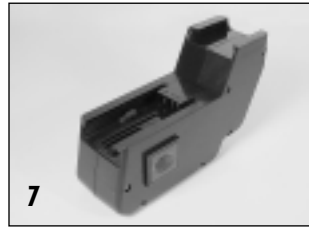
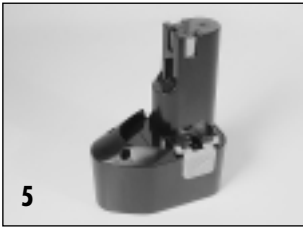
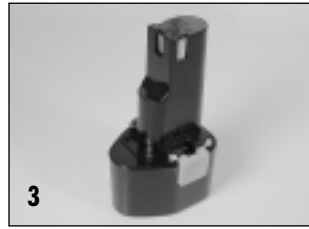
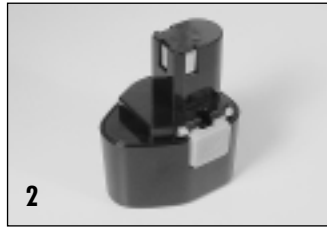


Dantona Part # TOOL-128

Voltage: 14.4
Capacity: 1500
Composition: NI-CD
Dimensions:
Connector:

POWERTOOL BATTERIES

BATTERIES COMPATIBLE WITH MILWAUKEE® PRODUCTS



| PIC # | VOLTS | PART# | mAh | TYPE | X-REFERENCE W/Milwaukee Battery Numbers |
|-------|-------|----------|------|------|--|
| 1 | 2.4V | TOOL-118 | 1500 | NICD | 48-11-0100 |
| | | TOOL-134 | 2000 | NICD | HI-CAP |
| | | TOOL-119 | 2400 | NICD | SUPER HI-CAP |
| 2 | 7.2V | TOOL-120 | 1500 | NICD | 48-11-0130 |
| | | TOOL-135 | 2000 | NICD | HI-CAP |
| | | TOOL-121 | 2400 | NICD | SUPER HI-CAP |
| 3 | 9.6V | TOOL-122 | 1500 | NICD | 48-11-0080 |
| | | TOOL-136 | 2000 | NICD | HI-CAP |
| | | TOOL-123 | 2400 | NICD | SUPER HI-CAP |
| 4 | 12V | TOOL-124 | 1500 | NICD | 48-11-1950 |
| | | TOOL-137 | 2000 | NICD | 48-11-1900 |
| | | TOOL-125 | 2400 | NICD | SUPER HI-CAP |

| PIC # | VOLTS | PART# | mAh | TYPE | X-REFERENCE W/Milwaukee Battery Numbers |
|-------|-------|----------|------|------|--|
| 5 | 12V | TOOL-126 | 1500 | NICD | 48-11-0140/0200 |
| | | TOOL-138 | 2000 | NICD | 48-11-0250 |
| | | TOOL-127 | 2400 | NICD | 48-11-0300 |
| 6 | 14.4V | TOOL-128 | 1500 | NICD | 48-11-1000 |
| | | TOOL-139 | 2000 | NICD | HI-CAP |
| | | TOOL-129 | 2400 | NICD | 48-11-1024 |
| 7 | 18V | TOOL-130 | 1500 | NICD | STANDARD CAP |
| | | TOOL-140 | 2000 | NICD | 48-11-2100/2101 |
| | | TOOL-131 | 2400 | NICD | SUPER HI-CAP |
| 8 | 18V | TOOL-85 | 1500 | NICD | STANDARD CAP |
| | | TOOL-86 | 2000 | NICD | 48-11-2200 |
| | | TOOL-87 | 2500 | NIMH | 48-11-2230 |

Milwaukee is a federally registered trademark of Milwaukee Electric Tool Corporation.