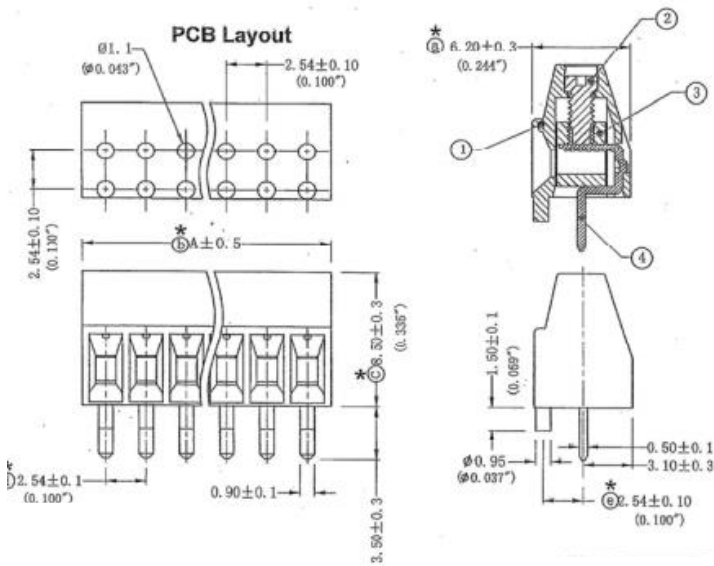


Professionally approved products.

## Datasheet

### 8 way PCB terminal block 2.54mm

RS Stock number [790-1111](#)



## Specifications

Body Orientation	Straight
Colour	Green
Current Rating	6A
Depth	6.2mm
Gender	Female
Length	20.32mm
Material	Polyamide
Mounting Type	Through Hole
Number of Contacts	8
Number of Rows	1
Pitch	2.54mm
Termination Method	Screw
Type	Terminal Blocks
Voltage Rating	125 V
Width	5.54mm