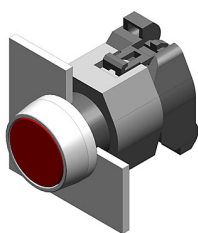


# EAO – Your Expert Partner for Human Machine Interfaces

## 704.002.7 - Indicator actuator front illumination

### 704.002.7 - Indicator actuator front illumination



*Attention: The preview is based on a sample product. This can differ from your current configuration.*

#### Mounting

Mounting cut-out Ø 22.5 mm  
Design raised

#### Front

Front shape round  
Front dimension Ø 29 mm  
Front ring material Plastic  
Front ring colour grey

#### Other Attributes

Weight 0.050 kg  
Marking plate optics translucent  
Marking plate colour white  
Marking plate illumination illuminativ (LED and filament lamp)

#### Operating-/Indication part

Lens optics transparent  
Lens material Plastic  
Lens profile flat  
Lens colour colourless

#### IP-Rating

Front protection IP 65

#### Connection Method

Terminal Screw

#### Actuator

Housing material Plastic  
Housing colour grey

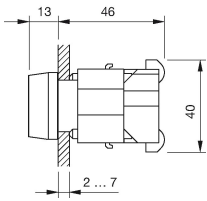
#### Function

Indicator

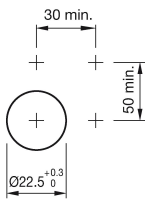
# EAO – Your Expert Partner for Human Machine Interfaces

704.002.7 - Indicator actuator front illumination

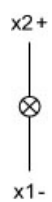
## Dimensions



## Mounting cut-outs



## Wiring diagram



## Additional information

Filament lamp or LED