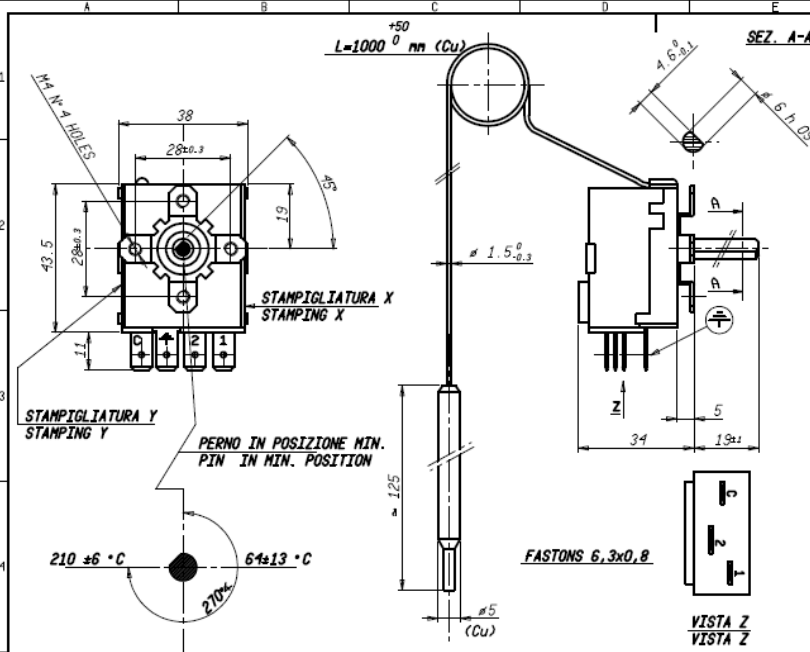


Professionally approved products.

Datasheet

RS SPDT 16 A Thermostat, +40°C +210°C

RS Stock number [733-4726](#)



DATI TECNICI TECHNICAL DATA

STAMPIGLIATURA Y
STAMPING Y

STAMPIGLIATURA X
STAMPING X

REGOLAZIONE D' INTERVENTO
TEMPERATURE RANGE

DIFFERENZIALE
TEMPERATURE DIFFERENTIAL

MAX. TEMPERATURA TESTA
MAX. BODY TEMPERATURE

MAX TEMPERATURA BULBO
MAX BULB TEMPERATURE

RAGGIO MIN. CURVATURA CAPILLARE
MIN. CAPILLARY BENDING RADIUS

PORTATA CONTATTI
CONTACTS RATING

OMOLOGAZIONI
APPROVED BY

SCHEMA ELETTRICO
WIRING DIAGRAM

C-1 16(6)A/250V~
 C-2 6(4)A/250V~
 15(2,5)A/250V~
 0497 CATEGORIA IV T85

210 °C TYPE TR2 9224
LINEA SETT-ANNO (WEEK-YEAR)

64 /210 ±6 °C

Δ t 9 ±2 K

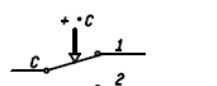
T 85

T 260 °C

5 mm.

15(2.5)A/250V~

0497



VALORI D'INTERVENTO CON TERMOSTATO A TEMPERATURA DI 20 °C
SWITCHING POINT WITH THERMOSTAT AT TEMPERATURE = 20 °C