



SERIES 1810 - SINGLE AND DOUBLE-POLE TOGGLE SWITCHES

TO 10 (4) A 250 V AC






PRODUCT FEATURES

- Attractive toggle switches
- 100 million times proven switching principle
- Long life endurance with 100 000 mechanical switching cycles
- Excellent actuating characteristic

ON REQUEST


- Other colors
- Other printing variants
- Other switching functions
- Other terminal variants
- Cable assembly


Mechanical life endurance	5E4 (changeover switch with OFF position in center) 10E4
Contact resistance (new condition)	< 100 mOhm (1 A 12 V DC)
Insulation resistance (new condition)	> 100 MOhm (500 V DC)
Proof tracking	250 PTI
Protection type	IP 40
Ambient temperature	terminal side -20 °C ... +100 °C actuating side -20 °C ... +55 °C
Flammability	UL 94 V-2
Glow wire test temperature	850 °C
Material actuator housing terminals	PA PA silver plated
Plug force of the terminals	≤ 80 N
Approval marks	 /  / 
Suitable for appliances of protection class II	



SERIES 1810 - SINGLE AND DOUBLE-POLE TOGGLE SWITCHES

TO 10 (4) A 250 V AC

 single-pole	Actuator color / printing	Housing color	10 (4) A 250 V AC 1E4	6 (4) A 250 V AC 5E4	6 (2) A 250 V AC 1E4	4 (2) A 250 V AC 1E4	6 A 250 V AC 1/2 HP	6 A 125 V AC 1/4 HP	6 A 125 - 250 V AC 1/8 HP	6 A 125 V AC 1/10 HP	4 A 250 V AC 1/10 HP	Terminal type	Terminal description	Contact distance (mm)	Contact material	Miscellaneous	Stock version
ON / OFF switch (SPST)																	
1811.1102			<input type="radio"/>	<input type="radio"/>			<input type="radio"/>	<input type="radio"/>					4.8	≥ 3	Ag		<input type="radio"/>
Normally open contact (SPNO)																	
1811.1202					<input type="radio"/>					<input type="radio"/>	<input type="radio"/>		4.8	≥ 3	Ag		
Changeover switch (SPDT)																	
1813.1102			<input type="radio"/>	<input type="radio"/>			<input type="radio"/>	<input type="radio"/>					4.8	≥ 3	Ag		<input type="radio"/>
Changeover switch with OFF position in the center (SPDT - Center OFF)																	
1818.1102				<input type="radio"/>				<input type="radio"/>					4.8	< 3	Ag		<input type="radio"/>
1818.1202				<input type="radio"/>				<input type="radio"/>					4.8	< 3	Ag	momentary function one side	<input type="radio"/>
1818.1302				<input type="radio"/>				<input type="radio"/>					4.8	< 3	Ag	momentary function one side	<input type="radio"/>
1818.2302				<input type="radio"/>				<input type="radio"/>						< 3	Ag	momentary function one side	

 double-pole	Actuator color / printing	Housing color	10 (4) A 250 V AC 1E4	6 (4) A 250 V AC 5E4	6 (2) A 250 V AC 1E4	4 (2) A 250 V AC 1E4	6 A 250 V AC 1/2 HP	6 A 125 V AC 1/4 HP	6 A 125 - 250 V AC 1/8 HP	6 A 125 V AC 1/10 HP	4 A 250 V AC 1/10 HP	Terminal type	Terminal description	Contact distance (mm)	Contact material	Miscellaneous	Stock version
ON / OFF switch (DPST)																	
1812.1102			<input type="radio"/>	<input type="radio"/>			<input type="radio"/>	<input type="radio"/>					4.8	≥ 3	Ag		
Changeover switch (DPDT)																	
1814.2102			<input type="radio"/>	<input type="radio"/>			<input type="radio"/>	<input type="radio"/>						≥ 3	Ag		
Changeover switch with OFF position in the center (DPDT - Center OFF)																	
1819.1102				<input type="radio"/>				<input type="radio"/>					4.8	< 3	Ag		
1819.1302				<input type="radio"/>				<input type="radio"/>					4.8	< 3	Ag	momentary function both sides	<input type="radio"/>

ROCKERSWITCHES
 PUSHBUTTON SWITCHES
 TOGGLE SWITCHES
 SLIDE SWITCHES
 ROTARY SWITCHES
 FOOT SWITCHES
 TACT AND KEY SWITCHES
 SMP-ACTION SWITCHES
 MICRO-SIGNAL SWITCHES
 SENSORS
 ECO
 PUSH N'DRIVE

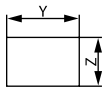


SERIES 1810 - SINGLE AND DOUBLE-POLE TOGGLE SWITCHES

TO 10 (4) A 250 V AC

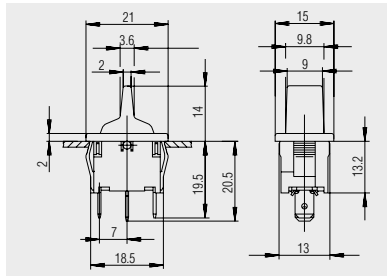


Basic types 1811, 1813 and 1818 single-pole

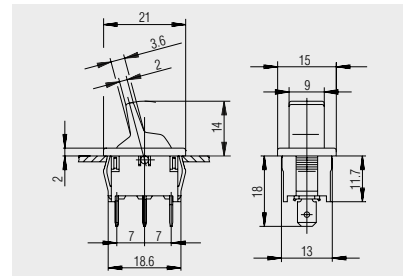


X = Wall thickness

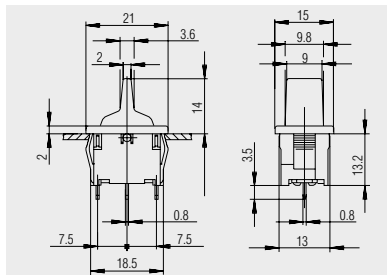
x	y	z
0.75 ... 1.25	19.2 ^{-0.1}	12.9 ^{+0.1}
1.25 ... 2	19.4 ^{-0.1}	12.9 ^{+0.1}
2 ... 3	19.8 ^{-0.1}	12.9 ^{+0.1}



Quick-connect terminal 4.8 x 0.8 basic type 1818



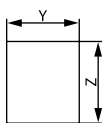
Quick-connect terminal 4.8 x 0.8 basic types 1813 and 1811 without third terminal



PCB terminal basic type 1818

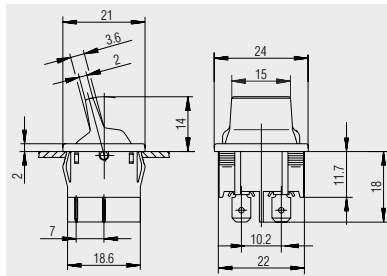


Basic types 1812, 1814 and 1819 double-pole

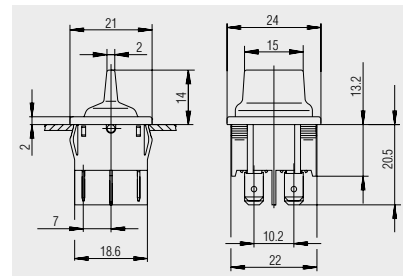


X = Wall thickness

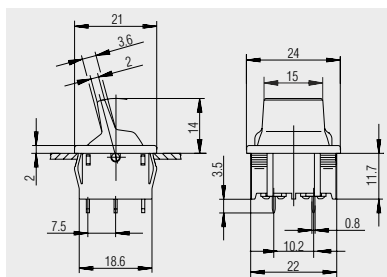
x	y	z
0.75 ... 1.25	19.2 ^{-0.1}	21.9 ^{+0.1}
1.25 ... 2	19.4 ^{-0.1}	21.9 ^{+0.1}
2 ... 3	19.8 ^{-0.1}	21.9 ^{+0.1}



Quick-connect terminal 4.8 x 0.8 basic type 1812



Quick-connect terminal 4.8 x 0.8 basic type 1819



PCB terminal basic type 1814

ROCKERSWITCHES

PUSHBUTTON SWITCHES

TOGGLE SWITCHES

SLIDE SWITCHES

ROTARY SWITCHES

FOOT SWITCHES

TACT AND KEY SWITCHES

SNAP-ACTION SWITCHES

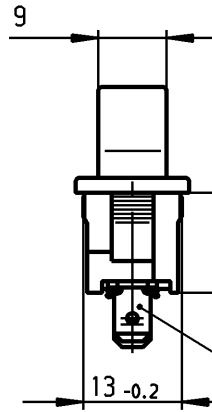
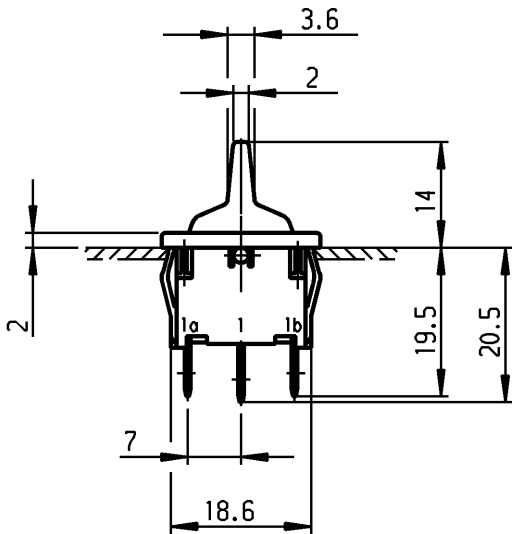
MICRO-SIGNAL SWITCHES

SENSORS

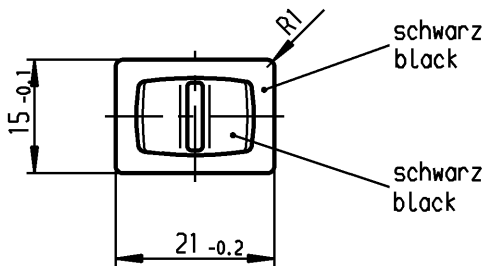
ECO

PUSH'N'DRIVE

	1	2	3	4	
A	Empfohlener Ausschnitt für Rastbefestigung (Grat gegenüber Bestückungsseite) recommended cut-out for snap-in fixing (edge opposite to snap-in direction)	Wanddicke wall thickness		Ausschnittlänge length of cut-out	Ausschnittbreite width of cut-out
		0.75 bis / to 1.25		19.2 -0.1	12.9 +0.1
		1.25 bis / to 2		19.4 -0.1	12.9 +0.1
		2 bis / to 3		19.8 -0.1	12.9 +0.1

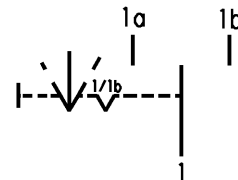


Flachstecker ähnl./ plug-in sim.
DIN 46 244-A4.8- 0.8



VERTRAULICH-CONFIDENTIAL

© Alle Rechte bei Marquardt, auch fuer den Fall von Schutzrechtsanmeldungen. Jede Verfuugungsbefugnis, wie Kopier- und Weitergaberecht, bei uns.
© This document is the exclusive property of Marquardt. Without our consent, it may not be reproduced or given to third parties.



**Aufschrift
Marking**



1818. μ
6(2)/250~T100/55
05

6A 125-250V AC
1/8HP
R58

Umschalter 1- polig

Mit Ausstellung in der Mitte
Für Geräte der Klasse II geeignet
Tastfunktion einseitig

SPDT

with centre-off
suitable for appliances of class II
biased from one side

Herstellort /-jahr/-woche nach DIN EN 60062
date of manufacture: place/year/week acc. to DIN EN 60062

Diese Unterlage ist geistiges Eigentum der Firma Marquardt. Schutzvermerk nach DIN 34 beachten. Copyright reserved.

Für Form und Lage FOR SHAPE AND LOC.	Für Winkel FOR ANGLE ± 2°	Allgemeintoleranzen UNTOLERANCED DIMENSIONS			Pause COPY	Blatt SHEET 01	Typ K	Zeichn./DRAWING NO. 1818.1202	Index	
		PROJECTION	Abmasse und Nennmassbereiche Angaben in mm	Laengen LENGTH						Radien RADI I
			0-6 ± 0.2	± 0.2	Original DIN A4	Maßstab SCALE 1:1	Geräteschalter Appliance Switch			
			>6-15 ± 0.4	±						
			>15-30 ± 0.4	±						
			>30-70 ±	±						
			>70-120 ±	±						
			>120-200 ±	±	0 10 20 30 mm		Ersatz für/REPLACEMENT OF Zchnng.qL.Nr.v.20.12.82			
c	29866	05.07.00 sig	g		CAD Medusa					Z
b	16191	03.10.84 rie	f		gez./DRAWN BY 05.07.00 sig					
a			e		gepr./CHECKED BY mej					
Ausg. ISSUE	Anderung REVISION	gez. DRAWN BY	Ausg. ISSUE	Anderung REVISION	gez. DRAWN BY	Ersatz für/REPLACEMENT OF Zchnng.qL.Nr.v.20.12.82		MARQUARDT Marquardt, D-78604 Riethem-Weilheim		