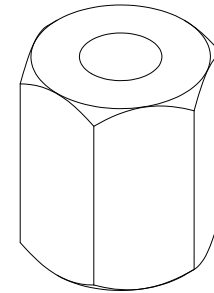
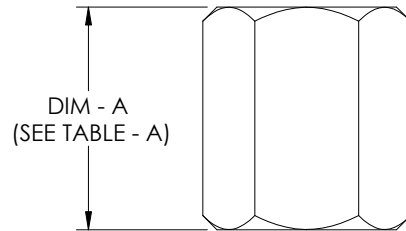
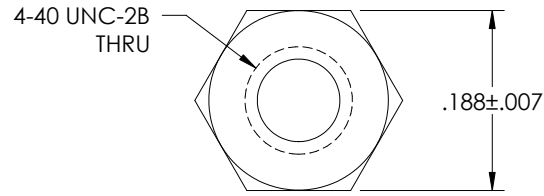


THE INFORMATION CONTAINED IN THIS DRAWING IS THE SOLE PROPERTY OF L-COM, INC. ANY REPRODUCTION IN PART OR WHOLE WITHOUT THE WRITTEN PERMISSION OF L-COM, INC. IS PROHIBITED.

REVISIONS			
REV	DESCRIPTION	DATE	APPROVED
A	APPROVED FOR PRODUCTION BY: S.SMITH	02/20/04	B.MAZEJKA

TABLE - A		
P/N	DIM - A	TOL
SDH	.232	+ .000 - .007
SDHS	.195	± .007
SDH-160	.160	± .007



PACKAGING NOTES:

1. SEAL 50 HEX STANDOFFS INTO AN L-COM LOGO BAG.

Component Specifications	
Material	
Hex Standoff	Brass
Finish	
Hex Standoff	Nickel Plated

CS-237

UNLESS OTHERWISE SPECIFIED,
DIMENSIONS ARE IN INCHES
TOLERANCES ARE:
.XX ±.01
.XXX ±.005

APPROVALS	DATE
DRAWN BY B.MAZEJKA	02/17/2004
CHECKED BY D.PARHAM	02/18/2004
APPROVED BY R.CARRICK	02/18/2004

CONFIGURATION DETAILS OF
UNDIMENSIONED FEATURES
MAY VARY

	45 BEECHWOOD DRIVE NORTH ANDOVER, MA 01845	
	PRODUCT DESCRIPTION SDH 4-40 HEX STANDOFF	
DRAWING TITLE <h2 style="text-align: center;">OUTLINE DRAWING</h2>		
SIZE A	FSCM NO. 43321	DWG. NO. SDH-OD1
SCALE: 5:1 CAD FILE: SDH-OD1.SLDDRW		REV A
SHEET 1 OF 1		