

D25P24A4GV00LF - D-Subminiature Delta D : Signal 25 way Pin Straight Solder, 200 cycles, Harpoons + Female Screw UNC 4 - 40 + Elec cont., 1.6 mm PCB thickness



www.fci.com

Mating Half

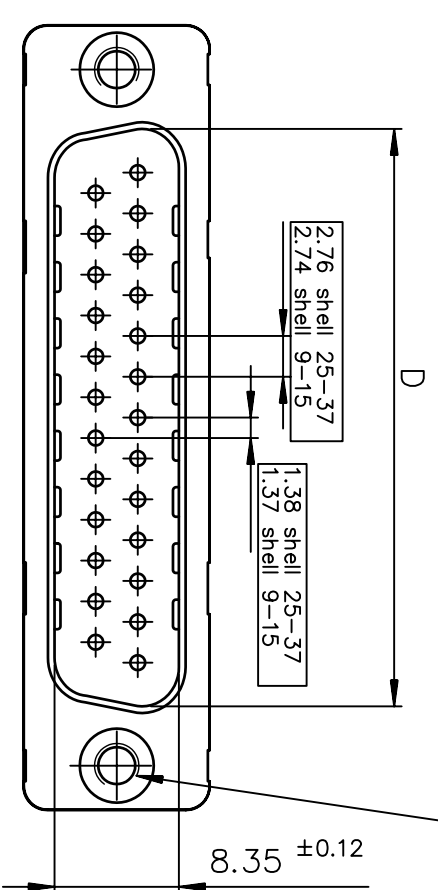
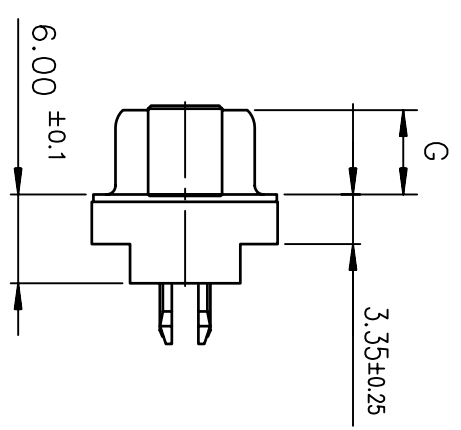
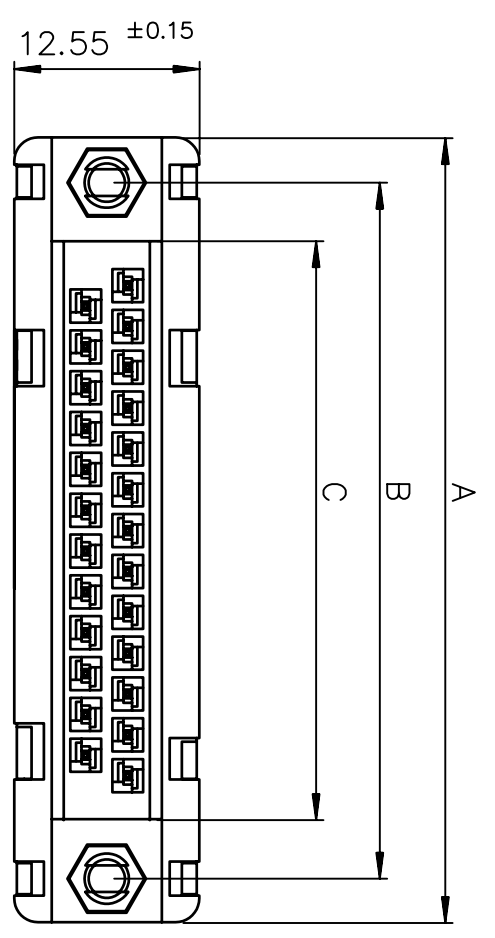
DB25S064TLF

865625SLTLF

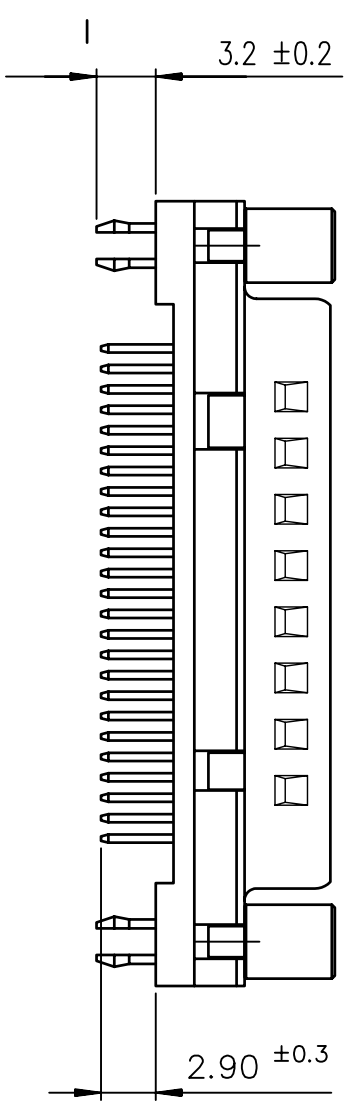
Specifications

General	
Contact type	Signal
Gender	Pin
Number of contacts (Total)	25
Orientation	Straight
Product Type	Connector
Termination Style	Solder
Dimensional	
Size (Shell)	B
Thickness (Board)	1.6 mm
Electrical	
Current rating	5A Per contact
Resistance (Contact)	< 10 milli-ohms
Voltage rating	300V rms at 50 Hz
Voltage rating (DWV - Dielectric withstanding)	1000V rms
Mechanical	
Durability (Plating - Mating cycles)	Std Class (>200 Mating Cycles)
Extraction force (Mating part)	0.3N min. Per contact
Insertion force (Mating part)	5N max. Per contact
Mounting	
Attachment	Board
Mounting accessory	Harpoons + Female Screw UNC 4-40 + Electrical continuity
Physical	
Plating (Contact)	Gold over Nickel
Plating (Shell)	Bright Pure Tin over Nickel

Plating (Termination)	Matte Tin over Nickel
Temperature (Operating - range)	-55°C to +125°C
Approvals / Certifications	
Approvals / Certifications	Recognized File E 118235 (R)
Other Features	
Most Popular Configuration	Yes



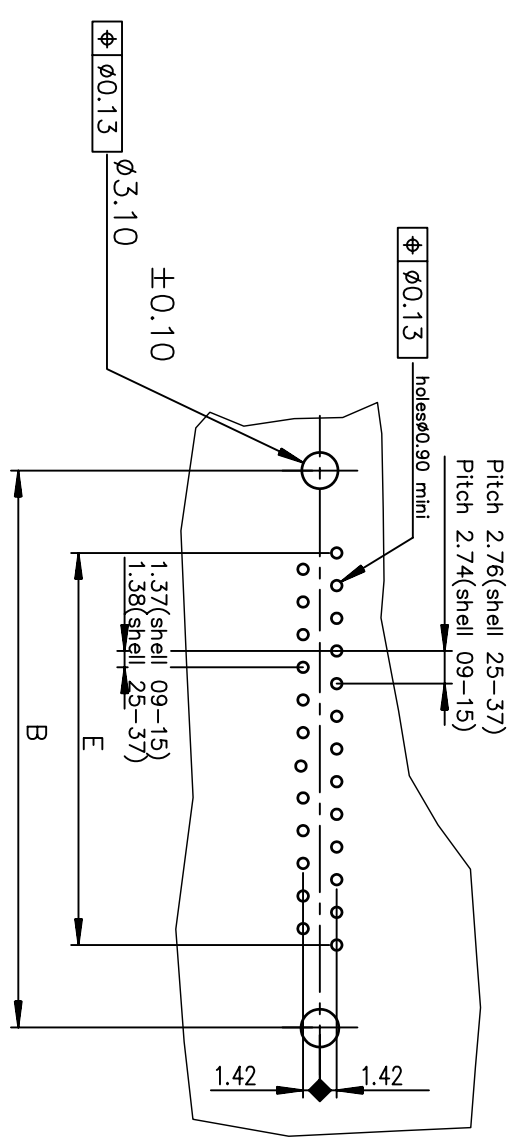
SHELL	A ± 0.38	B ± 0.12	C ± 0.10	D ± 0.25	E ± 0.07	G ± 0.25
09	30.81	24.99	16.96	16.79	10.96	5.90
15	39.14	33.32	25.18	25.12	19.18	5.90
25	53.03	47.04	39.12	38.84	33.12	5.70
37	69.32	63.50	55.68	55.30	49.68	5.70



SHELL	LEAD FREE PART NUMBER	TIN LEAD PART NUMBER	DESIGNATIONS
09	D09P24A6GV00LF	D09P24A6GV00	HEADER 9 CTS STRAIGHT-SOLDER TO BOARD-PCB HARPOON-SCREWLOCK -ELEC.CONTIN.
15	D15P24A6GV00LF	D15P24A6GV00	HEADER 15 CTS STRAIGHT-SOLDER TO BOARD-PCB HARPOON-SCREWLOCK -ELEC.CONTIN.
25	D25P24A6GV00LF	D25P24A6GV00	HEADER 25 CTS STRAIGHT-SOLDER TO BOARD-PCB HARPOON-SCREWLOCK -ELEC.CONTIN.
37	D37P24A6GV00LF	D37P24A6GV00	HEADER 37 CTS STRAIGHT-SOLDER TO BOARD-PCB HARPOON-SCREWLOCK -ELEC.CONTIN.

4 = Performance level PL3 ≥ 200 OPERATIONS
 6 = Performance level PL1 ≥ 500 OPERATIONS

PC card drilling dimensions(after plating)
 (thickness 1.60±0.20mm)



SHELL	LEAD FREE PART NUMBER	TIN LEAD PART NUMBER	DESIGNATIONS
09	D09P24A*GI00LF	D09P24A*GI00	HEADER 9 CTS STRAIGHT-SOLDER TO BOARD-PCB HARPOON-SCREWLOCK -ELEC.CONTIN.
15	D15P24A*GI00LF	D15P24A*GI00	HEADER 15 CTS STRAIGHT-SOLDER TO BOARD-PCB HARPOON-SCREWLOCK -ELEC.CONTIN.
25	D25P24A*GI00LF	D25P24A*GI00	HEADER 25 CTS STRAIGHT-SOLDER TO BOARD-PCB HARPOON-SCREWLOCK -ELEC.CONTIN.
37	D37P24A*GI00LF	D37P24A*GI00	HEADER 37 CTS STRAIGHT-SOLDER TO BOARD-PCB HARPOON-SCREWLOCK -ELEC.CONTIN.

4 = Performance level PL3 ≥ 200 OPERATIONS
 6 = Performance level PL1 ≥ 500 OPERATIONS

GENERAL CHARACTERISTICS AND ROHS INFORMATIONS:
 SEE DRAWING C01-8646-0000

www.fciconnect.com

Dr	JARRY	1995/08/11	ANGULAR	0.X	±0.1	size	A3	ECN	110-0059
Eng	PESSON	1995/08/11	LINEAR	0.XX	±0.1				
Chr	NIRMAL GEORGE	2010-02-23	0.XX	±2	±0.1				
Appr	SUDHIR VARMA	2010-02-23	Product family						

FCI logo

HEADER DELTA D STD EUROPE

HEADER DELTA D STD EUROPE

C01-8646-0816

CUSTOMER sheet 1 of 1