

# Electro-holding magnet

# Energise to hold

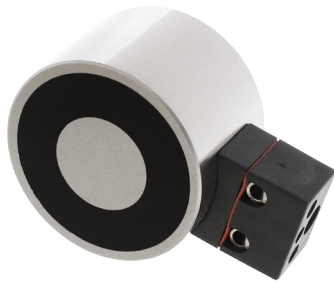
**80mm** diameter

## Part numbers

7917558

7917567

**12VDC or 24VDC** Operating voltage



## Pull gaps

Air gap (mm)	Magnetic Pull* (N)
0.00	2000.0
0.09	1560.0
0.18	1117.0
0.27	715.0
0.36	567.0
0.59	283.0
1.00	130.0

\* +/- 10%

## Description

Mountings

Finish

**Threaded holes in rear face**

**Bright nickel plated with machined face**

Product weight

**1.203kg**

## Technical Data

Typical holding force

**2000N**

ED rating

**100%**

IP Rating

**54**

Standard operating voltage

**12VDC 7917558**

**24VDC 7917567**

Current

**12V - 210mA**

**24V - 100mA**

Power consumption

**13.3W**

## Connection type

12VDC and 24VDC

**Two-pole connector**

## Recommended armature plate

Finish

**Bright nickel plated**

Diameter

**80mm**

Part No.

**7393214**

Weight

**400g**



To achieve the optimum pull force 100% contact area must be achieved using the recommended armature plate. The force will be affected if other material specifications, thicknesses and surfaces are used, or if the armature fails to make positive contact over the full diameter of the face of the magnet. Where misalignment is likely to be an issue we recommend that an oversized armature plate is used to ensure 100% full contact, this however will reduce the stated pull force by approximately 10%.

## Dimensions

