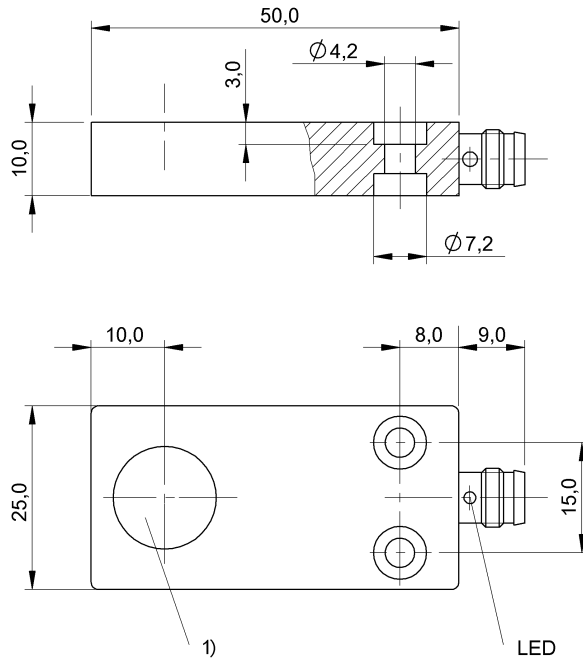
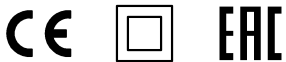


## BES 516-3009-SA3-MO-C-S49 BES0343



1) Sensing surface



### Display/Operation

Function indicator	no
Power indicator	yes

### Electrical connection

Connection	M8x1-Connector, 3-pole
Polarity reversal protected	yes
Short-circuit protection	yes

### Electrical data

Hysteresis H max. (% of Sr)	15.0 %
Load capacitance max. at Ue	0.5 µF
No-load current I <sub>o</sub> max., undamped	10 mA
Operating voltage U <sub>b</sub>	10...30 VDC
Output resistance R <sub>a</sub>	33.0 kOhm + D
Pollution degree	3
Protected against miswiring	yes
Rated insulation voltage U <sub>i</sub>	75 V DC
Rated operating current I <sub>e</sub> DC	200 mA
Rated operating voltage U <sub>e</sub> DC	24 V
Rated short circuit current	100 A

Ready delay t <sub>v</sub> max.	10 ms
Repeat accuracy max. (% of Sr)	5.0 %
Residual current I <sub>r</sub> max.	10 µA
Switching frequency	1000 Hz
Utilization category	DC -13
Voltage drop static max.	1 V

### Environmental conditions

Ambient temperature	-25...70 °C
Protection class	II
Protection type IEC 60529	IP67

### General data

Approval/Conformity	CE EAC
Basic standard	IEC 60947-5-2

### Material

Housing material	Aluminum
Material sensing surface	PBT

## BES 516-3009-SA3-MO-C-S49 BES0343

### Mechanical data

Dimension	50 x 25 x 10 mm
Installation	for flush mounting

### Output/Interface

Switching output	PNP Normally closed (NC)
------------------	--------------------------

### Range/Distance

Assured operating distance Sa	2 mm
-------------------------------	------

Range	2.5 mm
Rated operating distance Sn	2.5 mm
Ripple max. (% of Ue)	15 %
Temperature drift max. (% of Sr)	10 %

### Remarks

Effective switching distance sr in aluminum [mm]  $1.1 \pm 10\%$ . Assured switching distance sa in aluminum [mm] 0...0.9.  
The sensor is functional again after the overload has been eliminated.

### Connector view



### Wiring Diagram

