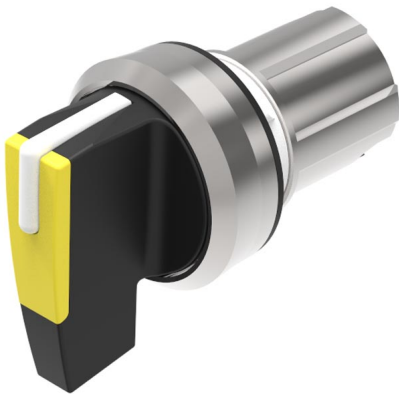


EAO – Your Expert Partner for Human Machine Interfaces

45-2828.2D40.001 - Selector switch actuator 2 positions, short lever

45-2828.2D40.001 - Selector switch actuator 2 positions, short lever



Attention: The preview is based on a sample product. This can differ from your current configuration.

Mounting

Mounting cut-out \varnothing 22.5 mm

Front

Front shape round
Front dimension \varnothing 29.45 mm
Front ring material Metal shiny
Front ring colour silver

Other Attributes

Weight 0.052 kg

Operating-/Indication part

Lever material Plastic
Lever colour yellow
Switching angle $C = 90^\circ$

IP-Rating

Front protection IP66, IP67, IP69K

Actuator

Switching action Rest - Maintained
Housing material Metal

Switching element

Rotary positions 2
6

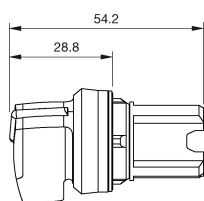
Function

Selector switch

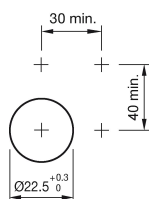
EAO – Your Expert Partner for Human Machine Interfaces

45-2828.2D40.001 - Selector switch actuator 2 positions, short lever

Dimensions



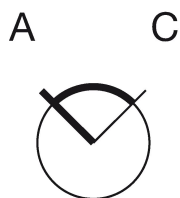
Mounting cut-outs



Wiring diagram



Switching positions



Additional information

External diameter of the long lever 44.8 mm

Legend

Switching action: A = Rest, C = Maintained