



SERIES 1550 - SINGLE AND DOUBLE-POLE ROCKER SWITCHES

TO 16 (4) A 250 V AC



PRODUCT FEATURES

- Inrush currents (capacitive) up to 100 A
- Two housing variants (with flange or lower lying)
- With mechanical forced opening
- Illuminated window with lens effect

ON REQUEST



- Other colors
- Other rocker labelings
- Other lamp variants
- Conformity IEC 60065 chap. 14.6
- Special rockers
- Cable assembly

| | |
|--|--|
| Mechanical life endurance | 5E4 |
| Inrush current (capacitive) | 100 A |
| Contact distance | ≥ 3 mm |
| Contact resistance (new condition) | < 100 mOhm (1 A 12 V DC) |
| Insulation resistance (new condition) | > 100 MOhm (500 V DC) |
| Proof tracking | 250 PTI |
| Protection type | IP 40 |
| Ambient temperature | terminal side -20 °C ... +100 °C actuating side -20 °C ... +55 °C |
| Flammability | UL 94 V-2 UL 94 V-0 (product-dependent) |
| Glow wire test temperature | 850 °C |
| Material actuator housing | PA PA |
| Plug force of the terminals | ≤ 80 N |
| Approval marks | |
| Suitable for appliances of protection class II | |



SERIES 1550 - SINGLE AND DOUBLE-POLE ROCKER SWITCHES

TO 16 (4) A 250 V AC



|  single-pole  | | Lighting voltage (V) | Actuator color / printing | Housing color | 7 A 250 V AC 5E4 | 16 (4) A 250 V AC 5E4 | 16 (4) A 250 V AC 1E4 | 10 (4) A 250 V AC 5E4 | 10 (4) A 250 V AC 25E3 | 10 A 12 V DC | 20 mA 250 V AC 5E4 | 20 A 250 V AC 2 HP | 20 A 125 V AC 1 HP | 16 A 250 V AC 2 HP | 16 A 125 V AC 1 HP | Terminal type | Terminal description | Contact material | EN 60335 cap. 30 conform "G" | Miscellaneous | Stock version |
|---|-----|----------------------|---------------------------|---------------|------------------|-----------------------|-----------------------|-----------------------|------------------------|--------------|--------------------|--------------------|--------------------|--------------------|--------------------|---------------|----------------------|------------------|------------------------------|---|---------------|
| ON / OFF switch (SPST) | | | | | | | | | | | | | | | | | | | | | |
| 1550.3102 | 230 | | | | | ○ | ○ | | | | | | | ○ | | | 6.3 | Ag | | | |
| 1550.3609 | 12 | | | | | | | | ○ | | | | | | | | 6.3 | Ag | | lower lying flange | |
| 1551.3102 | | | | | | ○ | ○ | | | | | | | ○ | ○ | | 6.3 | Ag | ○ | | ○ |
| 1551.3103 | | | | | | ○ | ○ | | | | | | | ○ | ○ | | 6.3 | Ag | | | |
| 1551.3106 | | | | | | ○ | ○ | | | | | | | ○ | ○ | | 6.3 | Ag | | | |
| 1551.2654 | | | | | | | | | | ○ | | | | | | | | Au | | approvals KEMA lower lying flange | |
| Normally closed contact (SPNC) | | | | | | | | | | | | | | | | | | | | | |
| 1581.1303 | | | | | ○ | | | | | | | | | ○ | ○ | | 6.3 | Ag | ○ | increased life endurance at a high electrical rating | |
| 1551.1303 | | | | | | ○ | ○ | | | | | | | ○ | ○ | | 6.3 | Ag | | | |
| Normally open contact (SPNO) | | | | | | | | | | | | | | | | | | | | | |
| 1551.3202 | | | | | | ○ | ○ | | | | | | | ○ | ○ | | 6.3 | Ag | | | ○ |
| 1551.3702 | | | | | | ○ | ○ | | | | | | | ○ | ○ | | 6.3 | Ag | | lower lying flange | |

ROCKERSWITCHES
 PUSHBUTTON SWITCHES
 TOGGLE SWITCHES
 SLIDE SWITCHES
 ROTARY SWITCHES
 FOOT SWITCHES
 TACT AND KEY SWITCHES
 SMP-ACTION SWITCHES
 MICRO-SIGNAL SWITCHES
 SENSORS
 ECO
 PUSH N' DRIVE



SERIES 1550 - SINGLE AND DOUBLE-POLE ROCKER SWITCHES

TO 16 (4) A 250 V AC

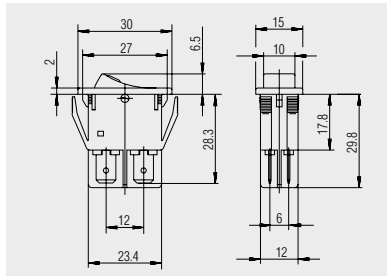
|  double-pole  | Lighting voltage (V) | Actuator color / printing | Housing color | | | | | | | | | | | Terminal type | Terminal description | Contact material | Miscellaneous | Stock version |
|---|----------------------|---------------------------|-----------------------|-----------------------|------------------------|--------------|--------------------|--------------------|--------------------|--------------------|--------------------|------------------------------|--|---------------|----------------------|------------------|---------------|---------------------------------------|
| | 7 A 250 V AC 5E4 | 16 (4) A 250 V AC 5E4 | 16 (4) A 250 V AC 1E4 | 10 (4) A 250 V AC 5E4 | 10 (4) A 250 V AC 25E3 | 10 A 12 V DC | 20 mA 250 V AC 5E4 | 20 A 250 V AC 2 HP | 20 A 125 V AC 1 HP | 16 A 250 V AC 2 HP | 16 A 125 V AC 1 HP | EN 60335 cap. 30 conform "G" | | | | | | |
| ON / OFF switch (DPST) | | | | | | | | | | | | | | | | | | |
| 1555.3102 | 230 | | | | | | | | | | | | | | | | | |
| 1555.3104 | 230 | | | | | | | | | | | | | | | | | |
| 1555.3108 | 230 | | | | | | | | | | | | | | | | | |
| 1555.3604 | 230 | | | | | | | | | | | | | | | | | lower lying flange |
| 1555.4608 | 230 | | | | | | | | | | | | | | | | | lower lying flange |
| 1555.8104 | 230 | | | | | | | | | | | | | | | | | flange dimension 31.5 x 17 mm |
| 1555.3125 | 115 | | | | | | | | | | | | | | | | | |
| 1555.3109 | 110 | | | | | | | | | | | | | | | | | |
| 1555.3120 | 110 | | | | | | | | | | | | | | | | | |
| 1555.3111 | 12 | | | | | | | | | | | | | | | | | |
| 1552.0102 | | | | | | | | | | | | | | | | | | |
| 1552.2601 | | | | | | | | | | | | | | | | | | lower lying flange |
| 1552.2602 | | | | | | | | | | | | | | | | | | lower lying flange |
| 1552.3102 | | | | | | | | | | | | | | | | | | |
| 1552.3104 | | | | | | | | | | | | | | | | | | |
| 1552.3112 | | | | | | | | | | | | | | | | | | conformant with EN 60065 par. 14.6 |
| 1552.3117 | | | | | | | | | | | | | | | | | | |
| 1552.3602 | | | | | | | | | | | | | | | | | | lower lying flange |
| 1552.4602 | | | | | | | | | | | | | | | | | | lower lying flange |
| 1552.4702 | | | | | | | | | | | | | | | | | | 2 PCB holders lower lying flange |
| 1552.4802 | | | | | | | | | | | | | | | | | | lower lying flange |

- ROCKERSWITCHES
- PUSHBUTTON SWITCHES
- TOGGLE SWITCHES
- SLIDE SWITCHES
- ROTARY SWITCHES
- FOOT SWITCHES
- TACT AND KEY SWITCHES
- SNAP-ACTION SWITCHES
- MICRO-SIGNAL SWITCHES
- SENSORS
- ECO
- PUSH'N'DRIVE




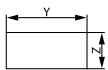
SERIES 1550 - SINGLE AND DOUBLE-POLE ROCKER SWITCHES

TO 16 (4) A 250 V AC



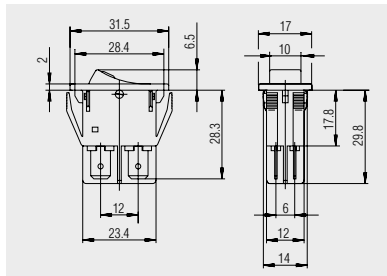
Basic types 1550 and 1555
single and double-pole

 Quick-connect terminal 6.3 x 0.8

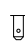


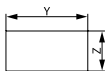
X = Wall thickness

| x | y | z |
|-------------|----------------------|----------------------|
| 0.8 ... 5.0 | 27.2 ^{+0.1} | 12.2 ^{+0.2} |



1555.8104
double-pole

 Quick-connect terminal 6.3 x 0.8
cover frame 31.5 x 17 mm



X = Wall thickness

| x | y | z |
|-------------|----------------------|--------------------|
| 0.8 ... 5.0 | 28.6 ^{+0.1} | 14 ^{+0.2} |

ROCKER SWITCHES
PUSHBUTTON SWITCHES
TOGGLE SWITCHES
SLIDE SWITCHES
ROTARY SWITCHES
FOOT SWITCHES
TACT AND KEY SWITCHES
SNAP-ACTION SWITCHES
MICRO-SIGNAL SWITCHES
SENSORS
ECO
PUSH N' DRIVE

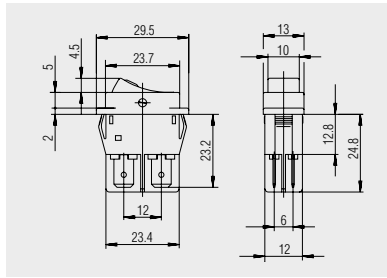


SERIES 1550 - SINGLE AND DOUBLE-POLE ROCKER SWITCHES

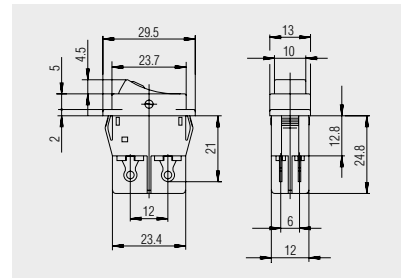
TO 16 (4) A 250 V AC



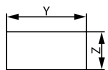
Basic types 1550 and 1555
lower lying flange
single and double-pole



Quick-connect terminal 6.3 x 0.8



Solder terminal

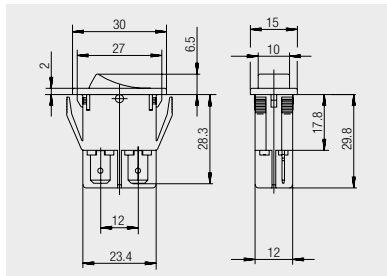


X = Wall thickness

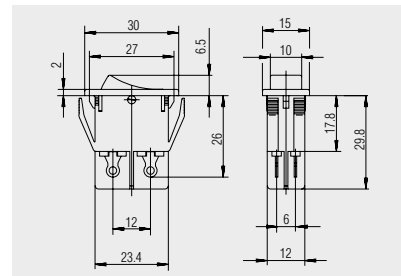
| x | y | z |
|---------------|----------------------|----------------------|
| 0.75 ... 1.25 | 26.2 ^{-0.1} | 12.4 ^{+0.1} |
| 2 ... 3 | 26.8 ^{-0.1} | 12.4 ^{+0.1} |
| 2 ... 3 | 26.8 ^{-0.1} | 12.4 ^{+0.1} |
| 1.25 ... 2 | 26.4 ^{-0.1} | 12.4 ^{+0.1} |



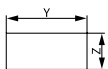
Basic type 1551 and 1552
single and double-pole



Quick-connect terminal 6.3 x 0.8



Solder terminal



X = Wall thickness

| x | y | z |
|-------------|----------------------|----------------------|
| 0.8 ... 5.0 | 27.2 ^{+0.1} | 12.2 ^{+0.2} |

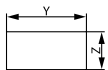


SERIES 1550 - SINGLE AND DOUBLE-POLE ROCKER SWITCHES

TO 16 (4) A 250 V AC

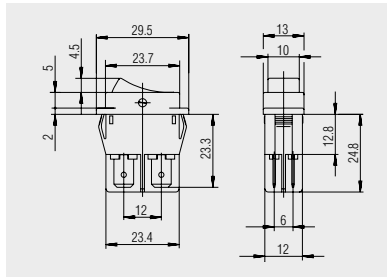


Basic types 1551 and 1552
lower lying flange
single and double-pole

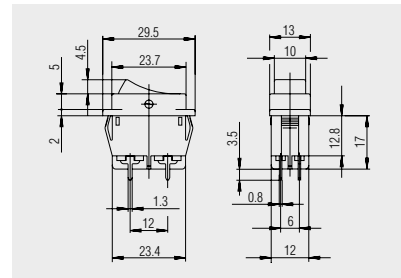


X = Wall thickness

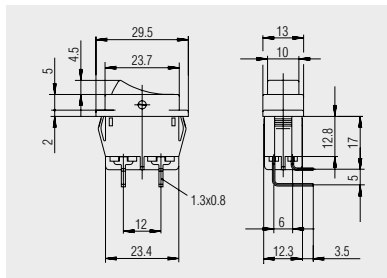
| x | y | z |
|---------------|----------------------|----------------------|
| 0.75 ... 1.25 | 26.2 ^{-0.1} | 12.4 ^{+0.1} |
| 1.25 ... 2 | 26.4 ^{-0.1} | 12.4 ^{+0.1} |
| 2 ... 3 | 26.8 ^{-0.1} | 12.4 ^{+0.1} |



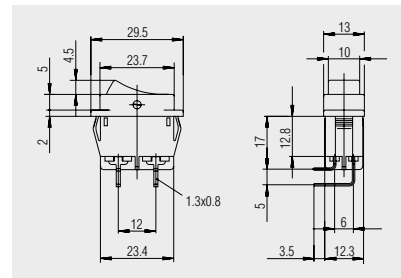
Quick-connect terminal 6.3 x 0.8



PCB terminal



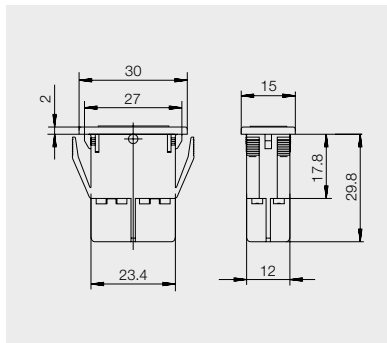
PCB terminal angled



PCB terminal angled mirror-inverted



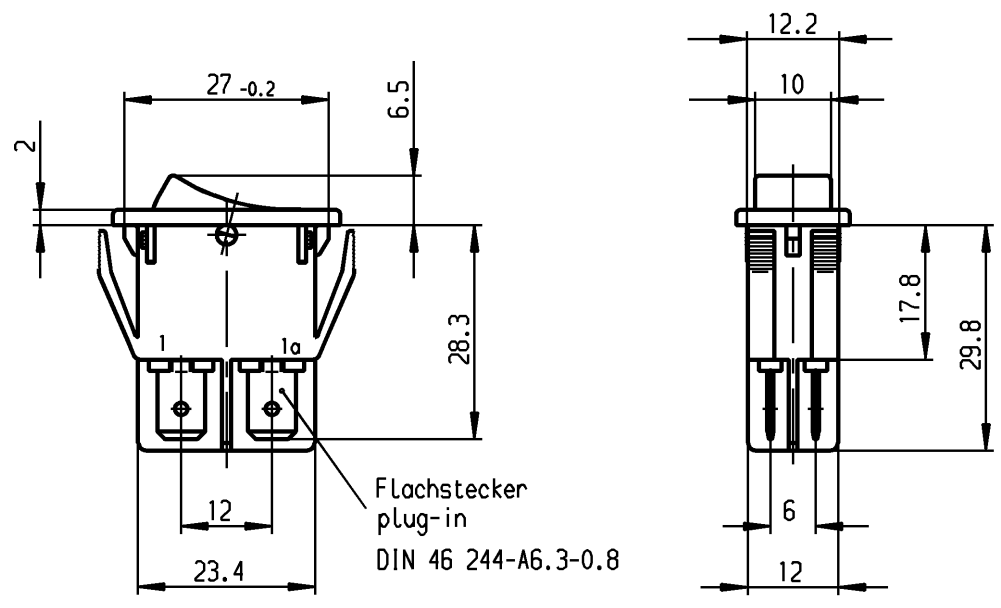
Dummy piece
203.103.013



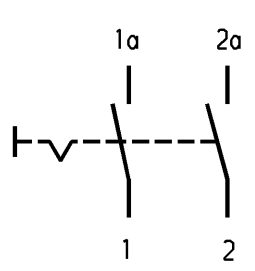
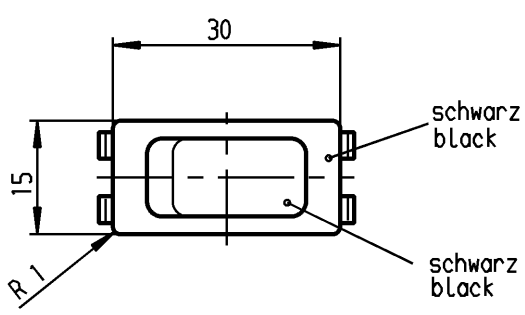
Dummy piece for series 1550 made of PA

| | | | | |
|--|---|---|--|---|
| 1 | 2 | 3 | 4 | |
| Empfohlener Ausschnitt für Rastbefestigung (Grat gegenüber Bestueckungsseite) recommended cut-out for snap-in fixing (edge opposite to snap-in direction) | | Wanddicke wall thickness 0.8 to / bis 5.0 | Ausschnittlaenge length of cut-out 27.2 ±0.1 | Ausschnittbreite width of cut-out 12.2 ±0.2 |

VERTRAULICH-CONFIDENTIAL
 Ⓢ Alle Rechte bei Marquardt, auch fuer den Fall von Schutzrechtsmeldungen. Jede Verfuegungsbefugnis, wie Kopier- und Weitergaberecht, bei uns.
 Ⓢ This document is the exclusive property of Marquardt. Without our consent, it may not be reproduced or given to third parties.



Aufschrift Marking
 Ⓢ
 155..
 16(4)/250 ~
 10(4)/250 ~ 5E4 T100/55 T100
 5/100A 250V ~
 05
 16A 125-250V AC
 1 HP 125V AC
 2 HP 250V AC
 R38



Herstellort/-jahr/-woche
 nach DIN EN 60062
 code of manufacture:
 place/year/week acc. to DIN EN 60062

Ausschalter 2-polig
 Fuer Gerate der Klasse II geeignet
 DPST
 suitable for appliances of class II

Schutzvermerk nach DIN 34 beachten COPYRIGHT RESERVED

| | | | | | | | | | | | | | |
|--------------------------------------|--|---|--|--|--|-----------------|--|----------------------------|--|----------------------------------|--|-------------------------------------|--|
| Für Form und Lage FOR SHAPE AND LOC. | | Allgemeintoleranzen UNTOLERANCED DIMENSIONS | | Pause COPY | | Blatt SHEET 01 | | Typ K | | Zeichn./DRAWING NO. 1552.3114 | | Index | |
| Für Winkel FOR ANGLE ± 2° | | PROJECTION | | Abmasse und Nennmassbereiche Angaben in mm | | Original DIN A4 | | Maßstab SCALE 1:1 | | Geraeteswitcher Appliance Switch | | | |
| | | Ⓢ | | Laengen RADII | | 0 10 20 30 mm | | CAD Medusa Z | | MARQUARDT | | Horquardt, D-78604 Riethem-Weilheim | |
| | | Ⓢ | | >0-6 ± 0.2 ± 0.2 | | | | gez./DRAWN BY 11.04.01 Mut | | Ersatz für/REPLACEMENT OF | | 1552.MV96.0007 v. 10.16.86 | |
| | | Ⓢ | | >6-15 ± 0.4 ± 0.4 | | | | gepr./CHECKED BY mej | | | | | |
| | | Ⓢ | | >15-30 ± 0.4 ± 0.4 | | | | | | | | | |
| | | Ⓢ | | >30-70 ± | | | | | | | | | |
| | | Ⓢ | | >70-120 ± | | | | | | | | | |
| | | Ⓢ | | >120-200 ± | | | | | | | | | |
| Ausg. ISSUE | | Anderung REVISION | | gez. DRAWN BY | | Ausg. ISSUE | | Anderung REVISION | | gez. DRAWN BY | | | |
| c | | g | | b | | f | | a | | e | | d | |
| 69572 | | 04.10.10 hhe | | 35129 | | 27.02.03 wj | | 31567 | | 11.04.01 Mut | | | |