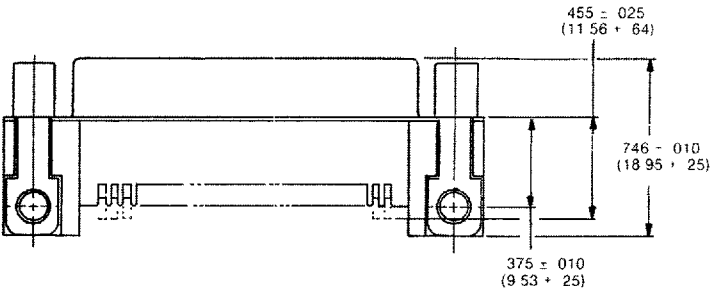
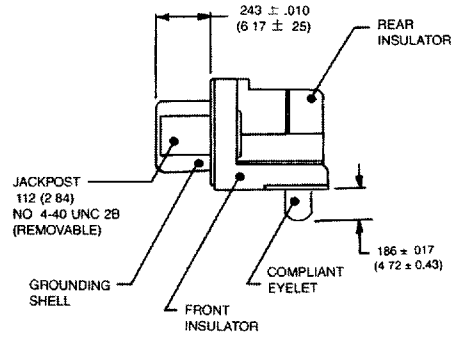
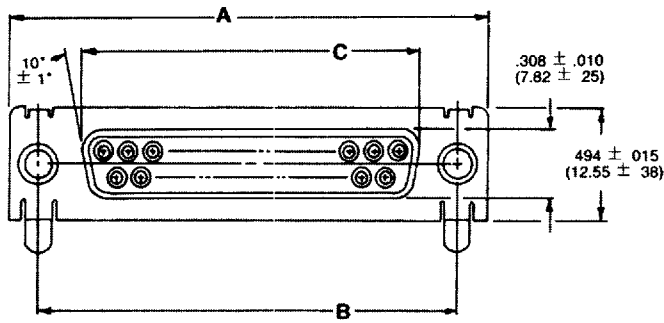


Surface Mount D

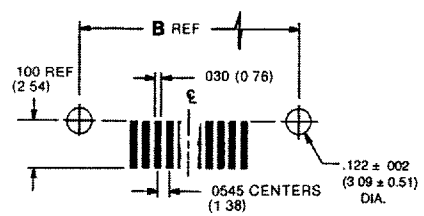
Dimensions/Part Numbers



No. of Contacts	Part Numbers		Dimensions		
	Female Screw Lock	4-40 Threaded Insert	A ±.015 (0.38)	B ±.005 (0.13)	C ±.010 (0.25)
9	DE111480-2	DE111480-3	1.213 (30.81)	.984 (24.99)	.640 (16.26)
15	DA111481-2	DA111481-4	1.541 (39.14)	1.312 (33.32)	.968 (24.59)
25	DB111483-2	DB111483-6	2.088 (53.04)	1.852 (47.04)	1.508 (38.30)

Highlighted part numbers indicate standard product; usually available with shorter lead times.

Recommended Pad Location on PC Board



No of Contacts	B ±.005 (0.13)
9	.984 (24.99)
15	1.312 (33.32)
25	1.852 (47.04)

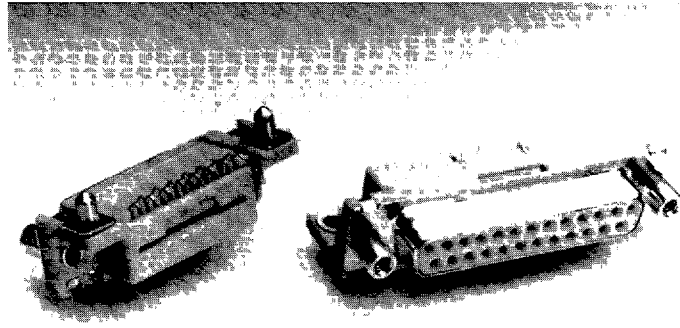


Dimensions are shown in inches (millimeters).
Dimensions subject to change.

D Subminiature Products • P.O. Box 35000, Santa Ana, CA 92705 6500 • (714) 261-5300 • FAX (714) 757-8324

Surface Mount D

ITT Cannon's versatile D Subminiature connector is available for surface mount applications. This 90° front metal shell version is intermatable with all existing D Subminiature connectors accommodating layout configurations of 9, 15 and 25. Process requirements, manufacturing concerns, and quality objectives have all been addressed to ensure that these surface mount products can be easily and successfully installed with a robot or an automatic placement machine.



FEATURES

- Plastic body material meets time and temperature requirements for all reflow processes.
- Body material has thermal coefficient of expansion (TCE) close to FR-4 or G10 printed circuit board material.
- Intermatable with existing D Subminiature products.
- Dimensioned with end surfaces accurately positioned from rivet centerline datum.
- Flexible in-line contact tails.
- Gull Wing contacts.

BENEFITS

- Connector can be soldered by the same process as with other surface mount devices, i.e., vapor phase.
- No design changes required for mating connector.
- Dimensioning allows robotic placement.
- Co-planarity assured on irregular boards because of flexible contact tails.
- Solder joints visually inspectable.
- Easy to inspect after soldering.

Board Mounted D

Performance and Material Specifications

PERFORMANCE SPECS

Current Rating:	3 Amp	
Temperature Indexing:	150°C	
Heat Deflection Temperature:	261 PSI	435°F
	66 PSI	475°F
Oxygen Index:	33%	

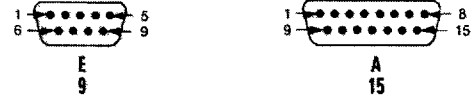
MATERIALS AND FINISHES

Contacts	Copper Alloy	Gold over nickel
Grounding Shell	Steel	Tin/lead
Eyelet	Brass	Tin/lead
Jackpost	Steel	Zinc
Insulators	Thermoplastic	Natural
	UL 94-V0	Light Tan

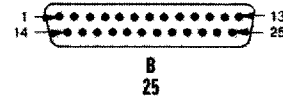
Contact Arrangements

Face View Pin Insert Contact Size #20

Shell Size
No. of Contacts



Shell Size
No. of Contacts



ITT Cannon

D Subminiature Products • P.O. Box 35000, Santa Ana, CA 92705-6500 • (714) 261-5300 • FAX (714) 757-8324

Dimensions are shown in inches (millimeters).
Dimensions subject to change.