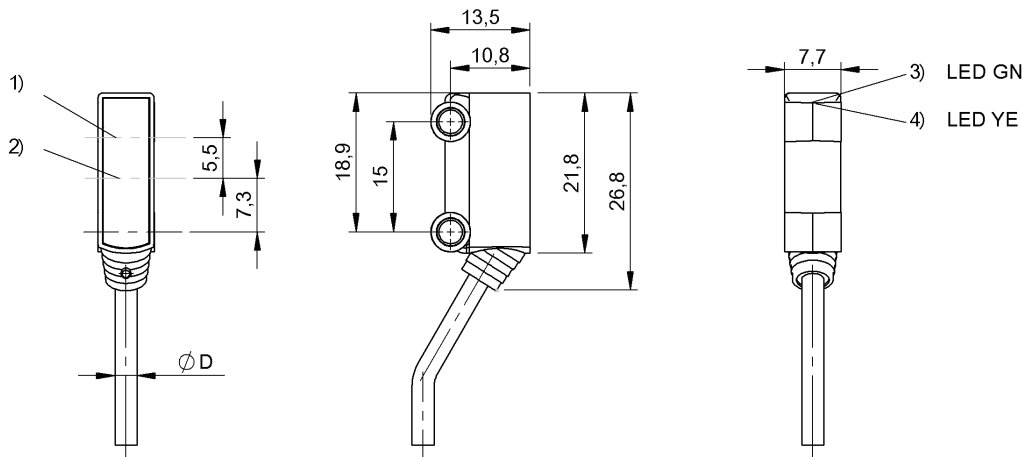
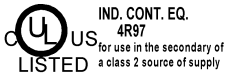


BOS R020K-NO-RF10-02 BOS021H



1) Optical axis receiver 2) Optical axis emitter 3) Operating voltage 4) Light reception



Electrical connection

Cable diameter D	2.40 mm
Cable length	2 m
Conductor cross-section	0.09 mm ²
Connection type	Cable, 2.00 m, PVC
Number of conductors	3
Polarity reversal protected	yes
Short-circuit protection	yes

Electrical data

MTTF (40 °C)	3378 a
No-load current I ₀ max. at U _e	20 mA
Operating voltage U _b	10...30 VDC
Rated insulation voltage U _i	50 V DC
Rated operating current I _e DC	50 mA
Rated operating voltage U _e DC	24 V
Switching frequency	800 Hz
Turn-off delay t _{off} max.	0.63 ms
Turn-on delay t _{on} max.	0.63 ms
Voltage drop U _d max. at I _e	2.5 V

Environmental conditions

Ambient temperature	-25...50 °C
Protection class	III
Protection type IEC 60529	IP67

Functional safety

Diagnostic coverage	0 %
Functional safety	no
Mission Time	10 a

General data

Approval/Conformity	CE cULus
Basic standard	IEC 60947-5-2
Series	R020K
Style	Square Connection 60°

Material

Housing material	ABS
Material jacket	PVC
Material sensing surface	PMMA

Mechanical data

Dimension	7.7 x 26.8 x 13.5 mm
Fastening detail	Screw M3

Optical data

Ambient light max.	5000 Lux
Light type	LED Red light
Special optical feature	Background suppression
Wave length	660 nm

Output/Interface

Switching output	NPN Normally closed (NC)
------------------	--------------------------

Range/Distance

Measuring range	1...15 mm
-----------------	-----------

BOS R020K-NO-RF10-02 BOS021H

Range	1...15 mm
Rated operating distance S_n	15 mm
Ripple max. (% of U_e)	20 %

Remarks

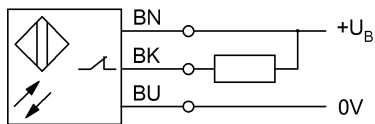
The sensor is functional again after the overload has been eliminated.
Reference object (target): gray card, 100 x 100 90 % remission, axial approach.

For additional information, refer to user's guide.
Order accessories separately.

For further information on MTTF/B10d, please refer to the MTTF / B10d Certificate.

Specification of the MTTF value and the B10d value do not represent any binding quality and/or life expectancy guarantees.

Wiring Diagram



Symbols for Optoelectronic Sensors

