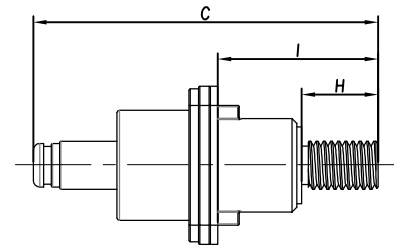
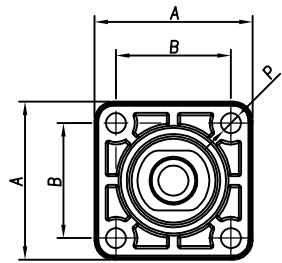
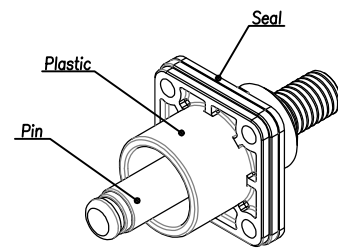


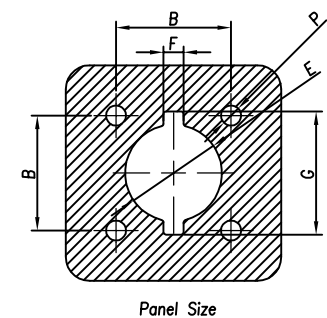
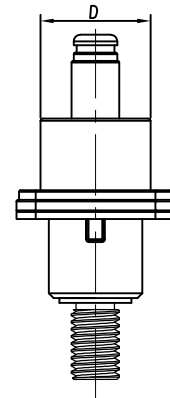
CUSTOMER DRAWING

REVISIONS				
REV	DESCRIPTION	DATE	BY	APPR
A	INITIAL RELEASE	12/12/13	DH	EC
B	CHANGE THE STRUCTURE	02/07/14	DH	EC
C	CHANGE THE STRUCTURE	01/26/14	DH	EC



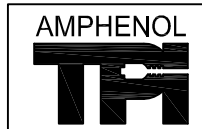
Ordering Example:

RadLok ———— RL 9 080 - 10 X - F1
 RadLok Pin ————
 RadLok Size: $\varnothing 8.0\text{mm}$ ————
 Pin To Thread ————
 Plating: 1 - Silver ————
 2 - Tin ————
 3 - Nickel ————
 Feed Thru ————



Specification

Size (mm)	A (mm)	B (mm)	C (mm)	D (mm)	E (mm)	F (mm)	G (mm)	H (mm)	I (mm)	Thread	P	Current (A)	Ordering Number (XXX-For Plating)	Plating
3.6	21.0	14.0	43.9	11.9	11.9	2.8	15.2	8	22.2	M4x0.7-6g	M3	70	RL9036-10X-F1	1 Silver
							18.2	10	24.2	M6x1.0-6g	M4	120	RL9057-10X-F1	2 Tin
							23.7	12	25.0	M8x1.25-6g		200	RL9080-10X-F1	3 Nickel
8.0	30.0	21.0	56.4	19.6	18.2	4.2	25.7	16	29.0	M10x1.5-6g	M4	300	RL9100-10X-F1	
							27.7	20	33.0	M12x1.75-6g		400	RL9120-10X-F1	
12.0	36.0	26.0	72.0	25.5	23.3									



Amphenol Technical Products International GZ

签名 SIGNATURE	日期 DATE	UNLESS OTHERWISE SPECIFIED			PART NAME: RADLOK® Feed Thru Pin To Thread
制图 DRAWN	DH	1) All dimensions are in metric(mm).	2) Tolerances are as follows:	3) PL DEC ±1.00	
审核 CHECKED	GX	02/07/2014	1 PL DEC ±0.50	2 PL DEC ±0.20	DWG NO: See Table
批准 APPROVAL	EC	02/07/2014	Angles ±1'		CUST PART #: N/A

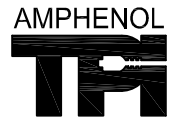
THIS DRAWING IS SUPPLIED FOR INFORMATION ONLY. DESIGN FEATURES, SPECIFICATIONS AND PERFORMANCE DATA SHOWN HEREON ARE THE PROPERTY OF THE AMPHENOL CORPORATION. NO RIGHTS OF REPRODUCTION ARE IMPLIED. ALL DIMENSIONS ARE SUBJECT TO NORMAL MANUFACTURING VARIATIONS.

CUSTOMER DRAWING

REVISIONS				
REV	DESCRIPTION	DATE	BY	APPR
A	INITIAL RELEASE	12/12/13	DH	EC
B	CHANGE THE STRUCTURE	01/26/14	DH	EC
C	CHANGE THE STRUCTURE	02/07/14	DH	EC

Table			
Plating Type	Size	Part number	Description
Silver	3.6mm	AC-HA000375	RL9036-101-F1 M4
	5.7mm	AC-HA000377	RL9057-101-F1 M6
	8.0mm	AC-HA000378	RL9080-101-F1 M8
	10.0mm	AC-HA000380	RL9100-101-F1 M10
	12.0mm	AC-HA000381	RL9120-101-F1 M12
Tin	3.6mm	AC-HA001014	RL9036-102-F1 M4
	5.7mm	AC-HA001016	RL9057-102-F1 M6
	8.0mm	AC-HA001017	RL9080-102-F1 M8
	10.0mm	AC-HA001019	RL9100-102-F1 M10
	12.0mm	AC-HA001020	RL9120-102-F1 M12
Nickel	3.6mm	AC-HA000324	RL9036-103-F1 M4
	5.7mm	AC-HA000326	RL9057-103-F1 M6
	8.0mm	AC-HA000327	RL9080-103-F1 M8
	10.0mm	AC-HA000329	RL9100-103-F1 M10
	12.0mm	AC-HA000330	RL9120-103-F1 M12

THIS DRAWING IS SUPPLIED FOR INFORMATION ONLY. DESIGN FEATURES, SPECIFICATIONS AND PERFORMANCE DATA SHOWN HEREON ARE THE PROPERTY OF THE AMPHENOL CORPORATION. NO RIGHTS OF REPRODUCTION ARE IMPLIED. ALL DIMENSIONS ARE SUBJECT TO NORMAL MANUFACTURING VARIATIONS.

		Amphenol Technical Products International GZ				PART NAME:	
		第三角投影 THIRD ANGLE PROJECTION	页面 SHEET	幅面 SIZE	版次 REV.	比例 SCALE	RADLOK® Feed Thru Pin To Thread
签名 SIGNATURE		日期 DATE		UNLESS OTHERWISE SPECIFIED 1) All dimensions are in metric(mm). 2) Tolerances are as follows: 0 PL DEC ±1.00 1 PL DEC ±0.50 2 PL DEC ±0.20		DWG NO: See Table	
制图 DRAWN	DH	02/07/2014	02/07/2014			CUST PART #: N/A	
审核 CHECKED	GX	02/07/2014	02/07/2014	Angles ±1°			
批准 APPROVAL	EC	02/07/2014	02/07/2014				