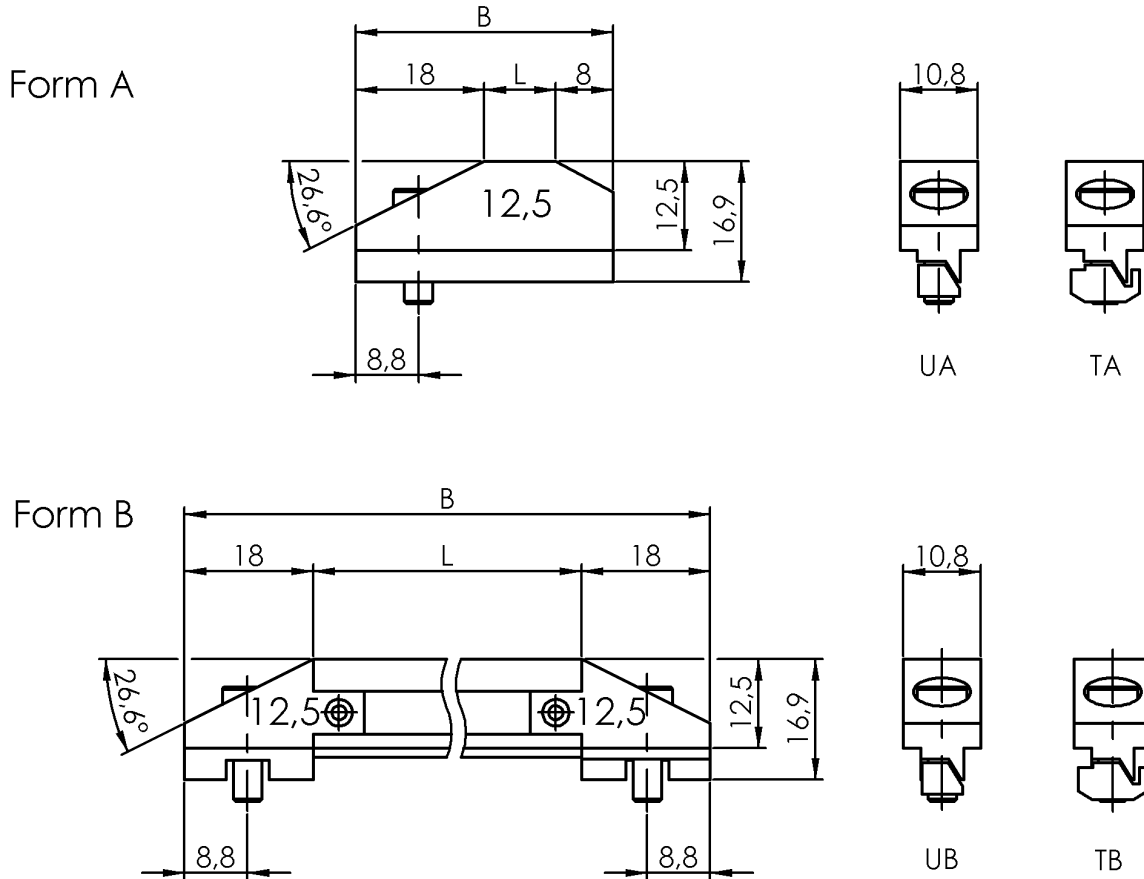


BNN UB-0224-12  
BNN00C6



## General data

Component Mechanical linear cams  
Per DIN 69639 yes

## Material

Material sensing surface Steel  
Surface hardened steel  
Surface hardened HRC 63±2

## Mechanical data

Clamping system Compression clamp

Dimension	undefined
Fine-adjustable	no
Foot shape for	U-slot
Foot width	6.00 mm
Height above cam tray	12.50 mm
Switch position spacing	16 mm 12 mm
Switching surface, length (L)	224 mm
Width of switching area	10.80 mm
Working principle	Mechanical

## Remarks

2 mm camera travel = 1 mm piston travel