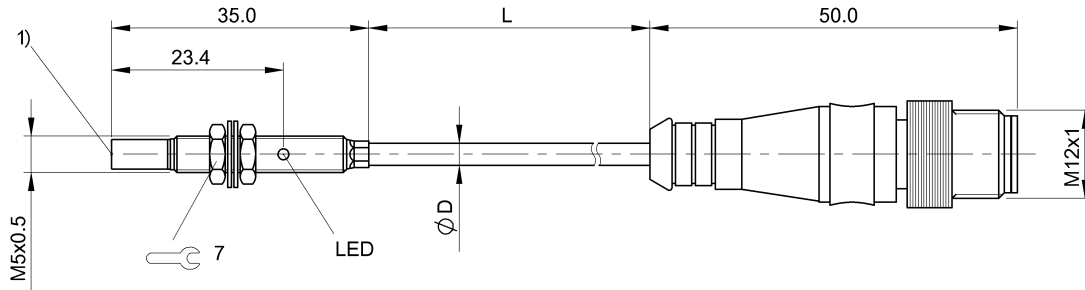


## BES M05ED-PSC50F-EP00,3-GS04 BES013C



1) Sensing surface



IND. CONT. EQ  
81U2  
for use in the secondary of  
a class 2 source of supply  
Environmental - Type 1 Enclosure



### Display/Operation

Function indicator	yes
Power indicator	no

### Electrical connection

Cable diameter D	3.00 mm
Cable length	0.3 m
Connection	M12x1-Connector, 4-pole, A-coded
Connection type	Cable with connector, 0.30 m, PUR
Polarity reversal protected	no
Short-circuit protection	yes

### Electrical data

Hysteresis H max. (% of Sr)	20.0 %
Load capacitance max. at Ue	0.5 µF
MTTF (40 °C)	735 a
No-load current I <sub>0</sub> max., undamped	8 mA
Operating voltage U <sub>b</sub>	10...30 VDC
Output resistance R <sub>a</sub>	Open collector
Pollution degree	3
Protected against miswiring	yes
Rated insulation voltage U <sub>i</sub>	75 V DC
Rated operating current I <sub>e</sub> DC	100 mA
Rated operating voltage U <sub>e</sub> DC	24 V
Rated short circuit current	100 A
Ready delay t <sub>v</sub> max.	20 ms
Repeat accuracy max. (% of Sr)	10.0 %
Residual current I <sub>r</sub> max.	10 µA
Switching frequency	3000 Hz
Utilization category	DC -12

Voltage drop static max. 2.5 V

### Environmental conditions

Ambient temperature	-25...70 °C
Protection type IEC 60529	IP67

### Functional safety

Diagnostic coverage	0 %
Functional safety	no
Mission Time	20 a

### General data

Approval/Conformity	cULus CE EAC
Basic standard	IEC 60947-5-2

### Material

Housing material	Stainless steel
Material jacket	PUR
Material sensing surface	PET-C

### Mechanical data

Dimension	Ø 5 x 35 mm
Installation	non-flush
Size	M5x0.5
Tightening torque	1 Nm

## BES M05ED-PSC50F-EP00,3-GS04 BES013C

### Output/Interface

Switching output PNP Normally open (NO)

### Range/Distance

Assured operating distance Sa	4.05 mm
Range	5 mm
Rated operating distance Sn	5 mm
Ripple max. (% of Ue)	10 %
Switching distance marking	■■■
Temperature drift max. (% of Sr)	10 %

### Remarks

ESD requirements met if housing is grounded.  
Cannot be flush mounted: see installation instructions for inductive sensors with extended switching distance 843281. Avoid pressure and contact in the area of the clear zone cap.  
The sensor is functional again after the overload has been eliminated.  
EMC: EMC protection circuit required, see 825345. Burst: 1.2 IVW: 2.2

For further information on MTTF/B10d, please refer to the MTTF / B10d Certificate.

Specification of the MTTF value and the B10d value do not represent any binding quality and/or life expectancy guarantees.

### Connector view



### Wiring Diagram

