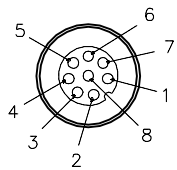
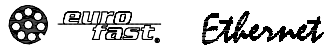


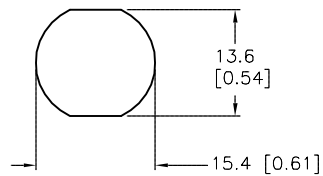
FEMALE END VIEW



- 1 = WHITE/BLUE
- 2 = WHITE/BROWN
- 3 = BROWN
- 4 = ORANGE (-TX)
- 5 = WHITE/GREEN (+RX)
- 6 = WHITE/ORANGE (+TX)
- 7 = BLUE
- 8 = GREEN (-RX)

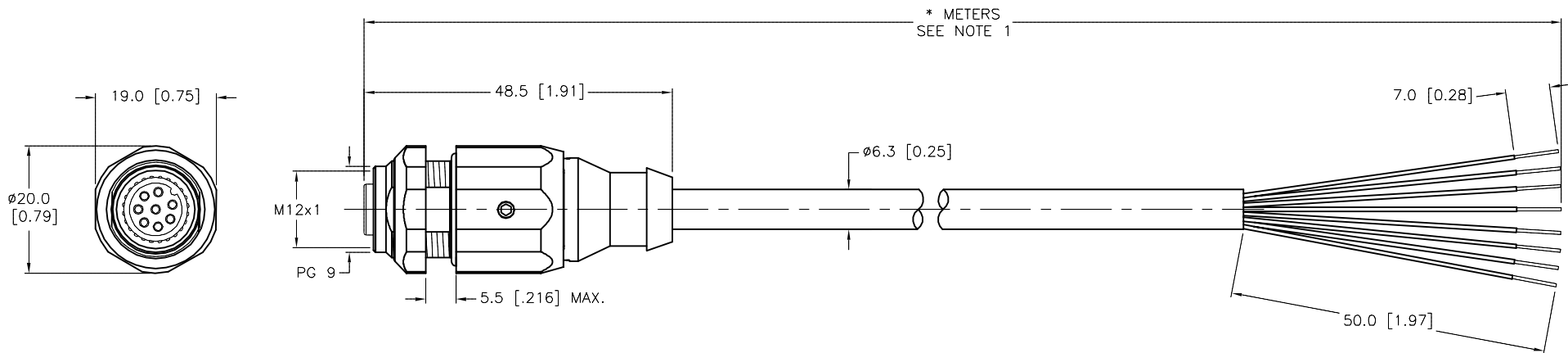


TYPICAL PANEL CUTOUT



SPECIFICATIONS

|                                   |                                   |
|-----------------------------------|-----------------------------------|
| CONTACT CARRIER MATERIAL          | TPU                               |
| MOLDED HEAD MATERIAL/COLOR        | TPU/BLACK                         |
| CONTACT MATERIAL/PLATING          | BRASS/GOLD                        |
| COUPLING NUT MATERIAL/PLATING     | BRASS/NICKEL                      |
| RATED CURRENT [A]                 | 1.0 A                             |
| RATED VOLTAGE [V]                 | 60 V                              |
| OUTER CABLE JACKET MATERIAL/COLOR | TPU/TEAL (HALOGEN FREE)           |
| CONDUCTOR INSULATION MATERIAL     | OLEFIN                            |
| NUMBER OF CONDUCTORS [AWG]        | 8x26 AWG, STRANDED, CAT 5e        |
| SHIELDING                         | TINNED-COPPER BRAID               |
| TEMPERATURE RANGE                 | -40°C to +50°C (-40°F to +122°F)  |
| PROTECTION CLASS                  | NEMA 1,3,4,6P AND IEC IP68, IP69K |
| MAX. PANEL THICKNESS              | 5.5mm [0.216"]                    |



| CABLE LENGTH | TOLERANCE*  |
|--------------|---|
| ALL LENGTHS  | + 4% (OR 50mm) OF LENGTH<br>- 0% (OR 0mm) OF LENGTH<br>WHICHEVER IS GREATER |
| STRIP LENGTH | TOLERANCE*  |
| 0-7mm        | ±0.5mm  |
| 8-29mm       | ±1.0mm  |
| 30-49mm      | ±2.0mm  |
| 50-69mm      | ±3.0mm  |
| 70-100mm     | ±4.0mm  |
| OVER 100mm   | ±5.0mm  |

\* UNLESS OTHERWISE SPECIFIED

NOTES:

1. "\*" INDICATES CABLE LENGTH IN METERS. CONTACT TURCK TO ORDER SPECIFIC LENGTHS.

SOURCE DRAWING - FOR REFERENCE ONLY

|                   |  |   |                     |  |               |   |  |
|-------------------|--|---|---------------------|--|---------------|---|--|
| RELATED DOCUMENTS |  | 3RD ANGLE PROJECTION  |                     | THIS DRAWING IS CONFIDENTIAL AND THE PROPERTY OF TURCK INC. USE OF THIS DOCUMENT WITHOUT WRITTEN PERMISSION IS PROHIBITED. |               | 3000 CAMPUS DRIVE<br>MINNEAPOLIS, MN 55441<br>1-800-544-7769<br>(763) 553-7300<br>(763) 553-0708 fax<br>turck.com |  |
| 1.                |  |   | DRFT                | RDS  | DATE 01/29/07 | DESCRIPTION<br>FKSDE 845-*M   |  |
| 2.                |  |   | APVD                |  | SCALE 1=1.0   |   |  |
| 3.                |  | ALL DIMENSIONS DISPLAYED ON THIS DRAWING ARE FOR REFERENCE ONLY | UNIT OF MEASUREMENT |  |               | IDENTIFICATION NO.  |  |
| 4.                |  |   | MILLIMETER [ INCH ] |  |               |   |  |
| MATERIAL          |  | CONTACT TURCK FOR MORE INFORMATION                              |                     | DO NOT SCALE THIS DRAWING  |               | REV<br>G  |  |
| FINISH            |  |   |                     | FILE: 777014526  |               | SHEET 1 OF 1  |  |

|     |                                    |     |          |         |
|-----|------------------------------------|-----|----------|---------|
| G   | UPDATE RATED CURRENT SPECIFICATION | KMY | 01/27/14 | 44548   |
| REV | DESCRIPTION                        | BY  | DATE     | ECO NO. |