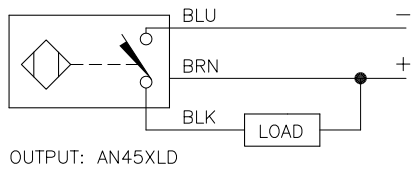
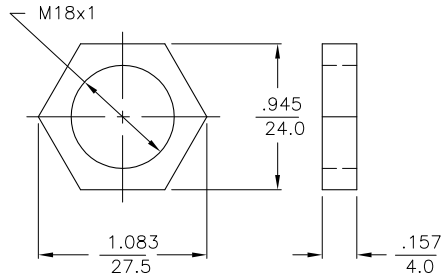


WIRING DIAGRAM



SHORT-CIRCUIT AND OVERLOAD PROTECTED

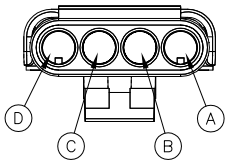
LOCKNUT LN-M18



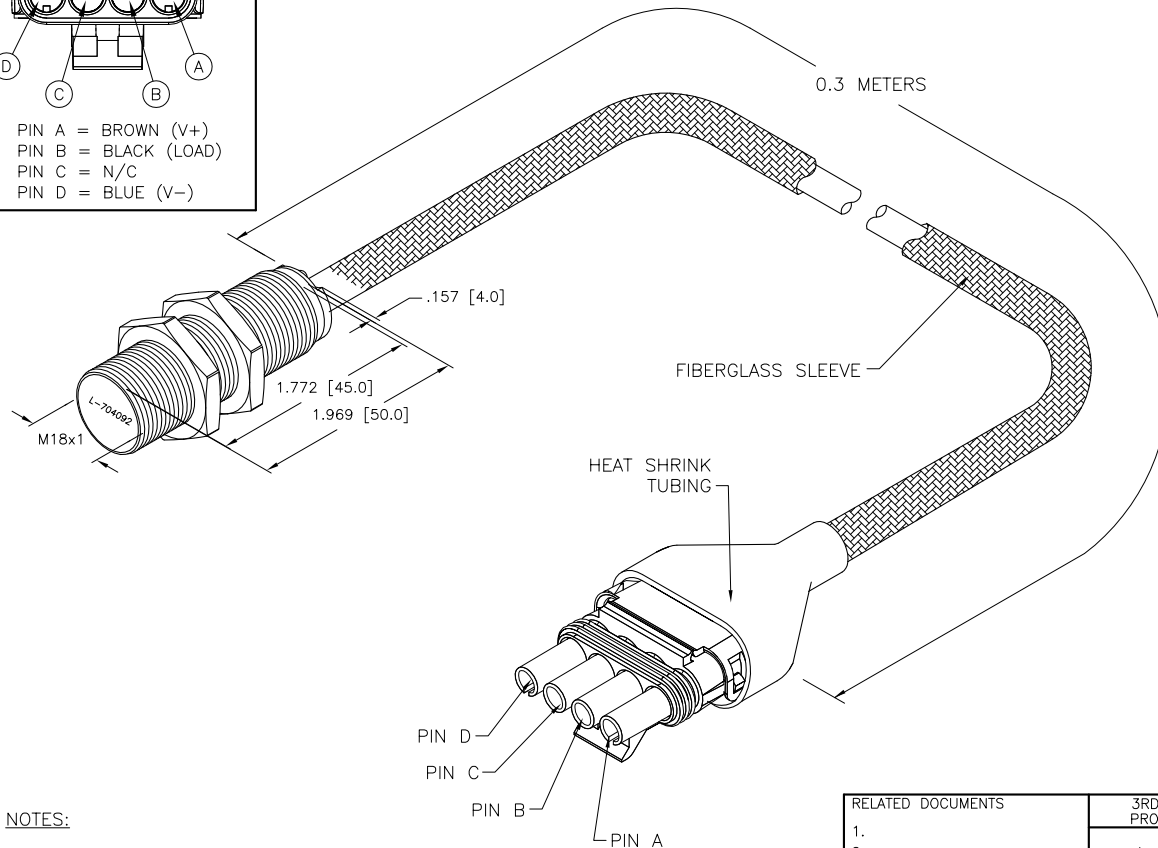
SPECIFICATIONS

| | |
|-----------------------------|---------------------------------------|
| RATED OPERATING DISTANCE | 8.0 mm [.315"] |
| MOUNTING MODE | FLUSH |
| TEMPERATURE DRIFT | ≤ ±10% ≤ ±15%, ≤ -25°C V ≥ +70°C |
| HYSTERESIS | 3-15% |
| MIN. REPEAT ACCURACY | ≤ 2% |
| AMBIENT TEMPERATURE | -40°C to +85°C (-40°F to +185°F) |
| OPERATING VOLTAGE | 8.4-65 VDC |
| RESIDUAL RIPPLE | ≤ 10% |
| DC OPERATIONAL CURRENT | ≤ 200 mA |
| NO-LOAD CURRENT | ≤ 15 mA |
| RESIDUAL CURRENT | ≤ 0.1 mA |
| RATED INSULATION VOLTAGE | ≤ 0.5 kV |
| OUTPUT FUNCTION | 3-WIRE, NORMALLY OPEN, NPN |
| SHORT-CIRCUIT PROTECTION | YES |
| MAX. VOLTAGE DROP | ≤ 1.8 V |
| WIRE BREAKAGE PROTECTION | INCORPORATED |
| REVERSE POLARITY PROTECTION | INCORPORATED |
| LOAD DUMP PROTECTION | IV/LEVEL 4, din 40839 (SAE J 1113-11) |
| SWITCHING FREQUENCY | ≤ 0.5 kHz |
| HOUSING MATERIAL | AISI 316L |
| ACTIVE FACE MATERIAL | PLASTIC, PA12-GF30 |
| END CAP MATERIAL | PLASTIC, EPTR |
| CONNECTION | CABLE |
| CABLE | ∅5.2, Lif32Y32Y, TPE |
| VIBRATION RESISTANCE | 55 Hz (IN ALL 3 PLANES) |
| SHOCK RESISTANCE | 150 g, 6 ms, (IN ALL 3 PLANES) |
| DEGREE OF PROTECTION | IP68/IP69K |
| SWITCHING STATUS INDICATION | LED/YELLOW |
| NOISE IMMUNITY | 100 V/m RADIATED & 100 mA BCI |

CONNECTOR END VIEW



- PIN A = BROWN (V+)
- PIN B = BLACK (LOAD)
- PIN C = N/C
- PIN D = BLUE (V-)



NOTES:

1. "/CS12505" DESIGNATES SENSOR WIRED TO PACKARD CONNECTOR. PRIVATE P/N ON SENSOR FACE.

TURCK LABELING ONLY ON SENSOR PACKAGING.

2. PACKARD CONNECTOR:
CONNECTOR: 10163682
SHRINK TUBING: 10190025
SLEEVING, VITON FIBERGLASS, 1/4IN,BL: 10162192

SOURCE DRAWING - FOR REFERENCE ONLY

| | | | | | | | |
|-------------------------------------|--|---|--|---|--|---|--|
| RELATED DOCUMENTS | | 3RD ANGLE PROJECTION | | THIS DRAWING IS PROPERTY OF TURCK INC. USE OF THIS DOCUMENT WITHOUT WRITTEN PERMISSION IS PROHIBITED. | | 3000 CAMPUS DRIVE MINNEAPOLIS, MN 55441 1-800-544-7769 (763) 553-7300 (763) 553-0708 fax turck.com | |
| 1. 2. 3. 4. | | | | DRFT RDS DATE 08/26/09 | | DESCRIPTION BI 8-EM18-AN45XLD-0.3M/CS12505 | |
| MATERIAL SEE SPECIFICATIONS | | ALL DIMENSIONS DISPLAYED ON THIS DRAWING ARE FOR REFERENCE ONLY | | DSGN RDS SCALE 1=1.5 | | IDENTIFICATION NO. T1584096 | |
| FINISH SEE SPECIFICATIONS | | CONTACT TURCK FOR MORE INFORMATION | | UNIT OF MEASUREMENT INCH [MILLIMETER] | | REV C | |
| C ADD CUSTOMER INFORMATION, SEE ECO | | RWC 10/13/09 28339 | | DO NOT SCALE THIS DRAWING | | FILE: T1584096 SHEET 1 OF 1 | |
| REV DESCRIPTION | | BY DATE ECO NO. | | | | | |