

SIRIUS SOFT STARTER, S2, 63A,  
30KW/400V, 40 DEGR., AC 200-480V,  
AC/DC 24V, SCREW TERMINALS

General details:		
<b>product brand name</b>		SIRIUS
<b>Product equipment</b>		
<ul style="list-style-type: none"> <li>integrated bridging contact system</li> </ul>		Yes
<ul style="list-style-type: none"> <li>thyristors</li> </ul>		Yes
<b>Product function</b>		
<ul style="list-style-type: none"> <li>intrinsic device protection</li> </ul>		Yes
<ul style="list-style-type: none"> <li>motor overload protection</li> </ul>		Yes
<ul style="list-style-type: none"> <li>evaluation of thermal resistor motor protection</li> </ul>		No
<ul style="list-style-type: none"> <li>reset external</li> </ul>		Yes
<ul style="list-style-type: none"> <li>adjustable current limitation</li> </ul>		Yes
<ul style="list-style-type: none"> <li>inside-delta circuit</li> </ul>		No
<b>Product component / outlet for enine brake</b>		No
<b>Item designation</b>		
<ul style="list-style-type: none"> <li>according to DIN EN 61346-2</li> </ul>		Q
<ul style="list-style-type: none"> <li>according to DIN 40719 extendable after IEC 204-2 / according to IEC 750</li> </ul>		G

Power Electronics:		
<b>product designation</b>		soft starters for standard applications
<b>Operating current</b>		
<ul style="list-style-type: none"> <li>at 40 °C / rated value</li> </ul>	A	63
<ul style="list-style-type: none"> <li>at 50 °C / rated value</li> </ul>	A	58
<ul style="list-style-type: none"> <li>at 60 °C / rated value</li> </ul>	A	53
<b>Emitted mechanical power / for three-phase servomotors</b>		
<ul style="list-style-type: none"> <li>at 230 V / at standard switching / at 40 °C                             <ul style="list-style-type: none"> <li>rated value</li> </ul> </li> </ul>	W	18,500
<ul style="list-style-type: none"> <li>at 400 V / at standard switching / at 40 °C                             <ul style="list-style-type: none"> <li>rated value</li> </ul> </li> </ul>	W	30,000
<b>yielded mechanical performance (hp) / for three-phase squirrel cage motors / at 200/208 V / at standard circuit / at 50 °C / rated value</b>	hp	15
<b>Operating frequency</b>		

• rated value	Hz	50 ... 60
Relative negative tolerance / of the operating frequency	%	-10
Relative positive tolerance / of the operating frequency	%	10
Operating voltage / with standard circuit / rated value	V	200 ... 480
Relative negative tolerance / of the operating voltage / with standard circuit	%	-15
Relative positive tolerance / of the operating voltage / with standard circuit	%	10
Minimum load in % of I <sub>M</sub>	%	20
Adjustable rated current / of the motor / for motor overload protection / minimum	A	26
Continuous operating current in % of I <sub>e</sub> / at 40°C	%	115
Active power loss / at operating current / at 40°C / during operating phase / typical	W	12

#### Control electronics:

Type of voltage / of the controlled supply voltage		AC/DC
Control supply voltage frequency / 1 / rated value	Hz	50
Control supply voltage frequency / 2 / rated value	Hz	60
Relative negative tolerance / of the control supply voltage frequency	%	-10
Relative positive tolerance / of the control supply voltage frequency	%	10
Control supply voltage / 1		
• at 50 Hz / for AC	V	24
• at 60 Hz / for AC	V	24
Relative negative tolerance / of the control supply voltage / at 60 Hz / for AC	%	-20
Relative positive tolerance / of the control supply voltage / at 60 Hz / for AC	%	20
Control supply voltage / 1 / for DC / rated value	V	24
Relative negative tolerance / of the control supply voltage / for DC	%	-20
Relative positive tolerance / of the control supply voltage / for DC	%	20
Type of display / for fault signal		red

#### Mechanical design:

Size of the engine control device		S2
Width	mm	55
Height	mm	160
Depth	mm	170
Type of mounting		screw and snap-on mounting

<b>mounting position</b>		With additional fan: With vertical mounting surface +/- 90° rotatable, with vertical mounting surface +/- 22.5° tiltable to the front and back Without additional fan: With vertical mounting surface +/- 10° rotatable, with vertical mounting surface +/- 10° t
<b>Distance, to be maintained, to the ranks assembly</b>		
• upwards	mm	60
• sideways	mm	30
• downwards	mm	40
<b>Installation altitude / at a height over sea level</b>	m	5,000
<b>Cable length / maximum</b>	m	300
<b>Number of poles / for main current circuit</b>		3

#### Electrical connections:

<b>Design of the electrical connection</b>		
• for main current circuit		screw-type terminals
• for auxiliary and control current circuit		screw-type terminals
<b>Number of NC contacts / for auxiliary contacts</b>		0
<b>Number of NO contacts / for auxiliary contacts</b>		2
<b>Number of change-over switches / for auxiliary contacts</b>		1
<b>Type of the connectable conductor cross-section / for main contacts / for box terminal / when using the front clamping point</b>		
• solid		2x (1.5 ... 16 mm <sup>2</sup> )
• finely stranded / with conductor end processing		0.75 ... 25 mm <sup>2</sup>
• stranded		0.75 ... 35 mm <sup>2</sup>
<b>Type of the connectable conductor cross-section / for main contacts / for box terminal / when using the back clamping point</b>		
• solid		2x (1.5 ... 16 mm <sup>2</sup> )
• finely stranded / with conductor end processing		1.5 ... 25 mm <sup>2</sup>
• stranded		1.5 ... 35 mm <sup>2</sup>
<b>Type of the connectable conductor cross-section / for main contacts / for box terminal / when using both clamping points</b>		
• solid		2x (1.5 ... 16 mm <sup>2</sup> )
• finely stranded / with conductor end processing		2x (1.5 ... 16 mm <sup>2</sup> )
• stranded		2x (1.5 ... 25 mm <sup>2</sup> )
<b>Type of the connectable conductor cross-section / for AWG conductors / for main contacts / for box terminal</b>		
• when using the back cl		16 ... 2
• when using the front c		18 ... 2
• when using both clampi		2x (16 ... 2)
<b>Type of the connectable conductor cross-section</b>		
• for auxiliary contacts		

- solid
- finely stranded / with conductor end processing
- for AWG conductors / for auxiliary contacts
- finely stranded / with wire end proc

2x (0.5 ... 2.5 mm<sup>2</sup>)  
 2x (0.5 ... 1.5 mm<sup>2</sup>)  
 2x (20 ... 14)  
 2x (20 ... 16)

#### Ambient conditions:

##### Ambient temperature

- during operating
- during storage

°C -25 ... +60  
 °C -40 ... +80

##### Derating temperature

°C 40

##### Protection class IP

IP00

#### Certificates/approvals:

##### General Product Approval

##### EMC

##### For use in hazardous locations



CCC



CSA



GOST



UL



C-TICK



ATEX

##### Test Certificates

##### Shipping Approval

##### other

[Type Test Certificates/Test Report](#)



GL



LRS



PRS

[Declaration of Conformity](#)

[Environmental Confirmations](#)

#### UL/CSA ratings

##### yielded mechanical performance (hp) / for three-phase squirrel cage motors

- at 220/230 V / at standard circuit
  - at 50 °C / rated value
- at 460/480 V / at standard circuit
  - at 50 °C / rated value

hp 20  
 hp 40

##### Contact rating designation / for auxiliary contacts / according to UL

B300 / R300

#### Further information:

##### Information- and Downloadcenter (Catalogs, Brochures,...)

<http://www.siemens.com/industrial-controls/catalogs>

##### Industry Mall (Online ordering system)

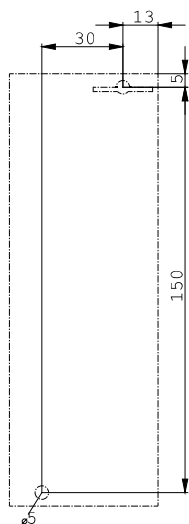
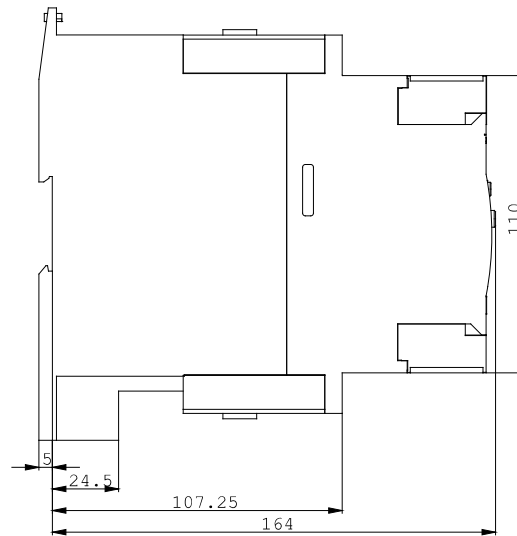
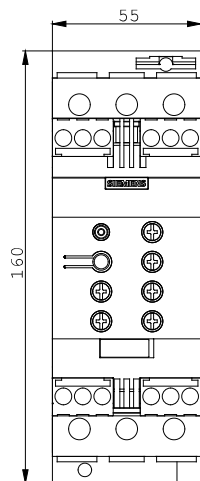
<http://www.siemens.com/industrial-controls/mall>

##### CAX-Online-Generator

<http://www.siemens.com/cax>

##### Service&Support (Manuals, Certificates, Characteristics, FAQs,...)

<http://support.automation.siemens.com/WWW/view/en/3RW4037-1BB04/all>



last change:

Feb 7, 2013