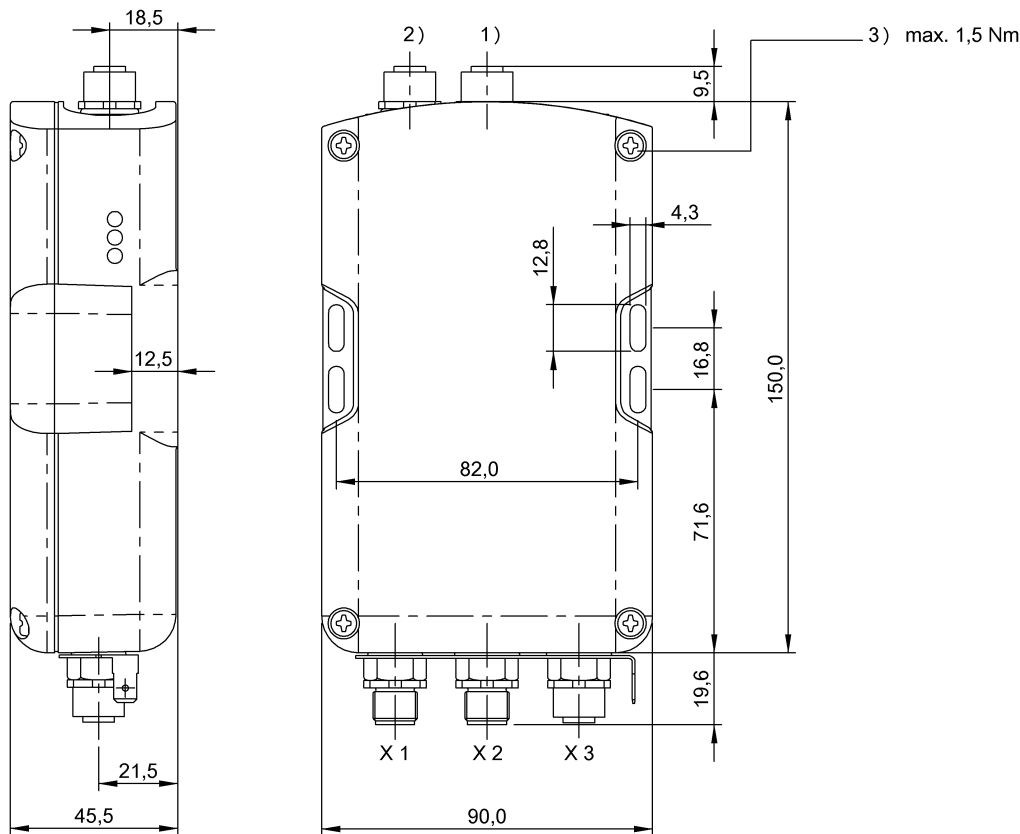


BIS L-6003-025-050-03-ST12
BIS00E7



1) Head 1 2) Head 2 3) Tightening torque



Display/Operation

CT1 present/operating	LED green/LED yellow
CT2 present/operating	LED green/LED yellow
MOD/NET STATUS	LED green/LED red

Electrical connection

Connection (COM 1)	X2 (DeviceNet): Connector, 5-pole
Connection (COM 2)	X3 (DeviceNet OUT): Female, 5-pole
Connection (Service)	X4: , 6-pole
Connection (supply voltage IN)	X1 (supply voltage/digital input): Connector, 5-pole
Connection slots	Head 1: Female, 8-pole Head 2: Female, 8-pole
Connector port 01, note type	for all L-3... with connector, 8-pin

Electrical data

Control input	1 (optocoupler isolated)
Control voltage active	4...40 V
Control voltage inactive	1.5...-40 V

Current consumption max. at 24 V DC	600 mA
Delay time typ.	5 ms
Input current max. at 24 V	11 mA
Operating voltage U_b	19.2...28.8 VDC

Environmental conditions

Ambient temperature	0...60 °C
EN 60068-2-27, Continuous shock load	yes
EN 60068-2-27, Shock	yes
EN 60068-2-6, Vibration	yes
Protection type IEC 60529	IP65 with connector

Functional safety

Diagnostic coverage	0.0 %
EN 60068-2-32 Free fall	yes
Functional safety	no
Mission Time	20 a

General data

Approval/Conformity	CE UL-FILE E227256, Vol.X1, BIS EN 55011
	Size 1, Cl. A

BIS L-6003-025-050-03-ST12 BIS00E7

Material

Housing material ABS

Range/Distance

Residual ripple max. 10 %

Mechanical data

Application weight 375.00 g
Dimension 90 x 45.5 x 150 mm

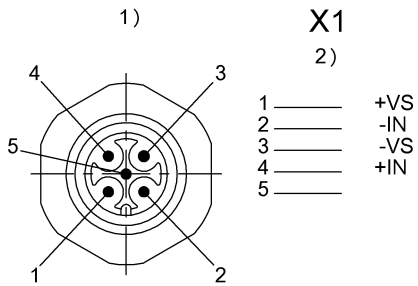
Remarks

When installing, the technical standards and regulations of the corresponding countries must be observed.
Values are under rated conditions unless otherwise specified.
Accessories not included: 5-pin coupler BKS-S92-00 straight 5-pin coupler BKS-S93-00 angled
Accessories not included: for X1 = 5-pin coupler BKS-S79-00

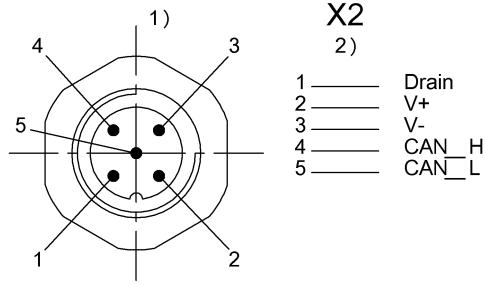
Output/Interface

Interface DeviceNet
 galvanically isolated

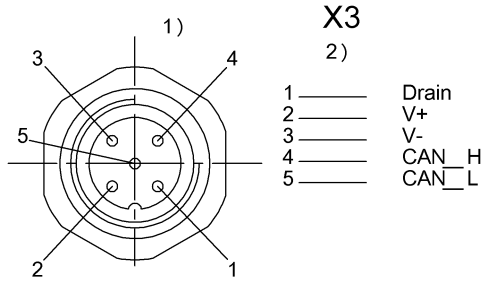
Connector view



1) View towards connector 2) Connector 5-pin/
Function



1) View towards connector 2) Connector 5-pin/
Function

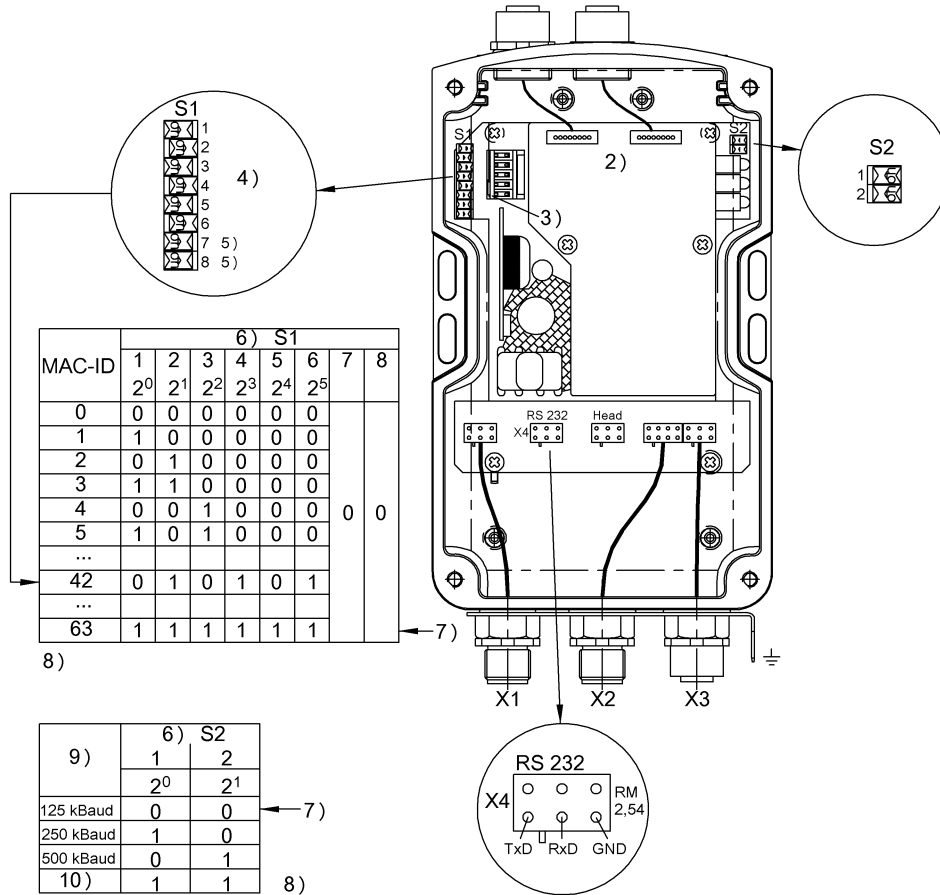


1) View towards connector 2) Female 5-pin/
Function

BIS L-6003-025-050-03-ST12
BIS00E7

Additional View

1)



1) Wiring note 2) Inside view 3) Configuration module 4) Example: Address 42 5) only off 6) Switch panel 7) Factory default setting 8) Switch closed = 1 9) Baud rate 10) invalid