



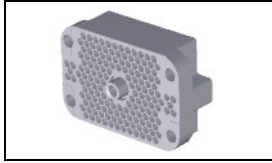
Have a Question?  
Chat with a Product Information Specialist

What can we help you find?

[Products](#) [Industries](#) [Resources](#) [About TE](#) [My Account](#) [Innovation](#) [Support Center](#)

## 202800-1 Product Details

[Share](#) [Print](#) [Email](#)



**202800-1**

TE Internal Number: 202800-1

Active

[View 3D PDF](#)

### M Series Connectors

Always EU RoHS/ELV Compliant (Statement of Compliance)

#### Product Highlights:

- Product Series = M Series
- Connector
- Cable-to-Cable / Cable-to-Panel
- Applies To Panel, Applies To Wire/Cable
- Housing

[View all Features](#)

### Quick Links

- ▶ [Pricing & Availability](#)
- ▶ [Search for Tooling](#)
- ▶ [Product Feature Selector](#)
- ▶ [Contact Us About This Product](#)

[Add to My Part List](#) [Request Sample](#) [Find Similar Products](#) [Buy Product](#)

Documentation & Additional Information	
<p><b>Product Drawings:</b></p> <ul style="list-style-type: none"> <li>• <a href="#">RECEPTACLE ASSEMBLY, 160 POSITION, M SERIES (PDF, English)</a></li> </ul> <p><b>Catalog Pages/Data Sheets:</b></p> <ul style="list-style-type: none"> <li>• <a href="#">M_SERIES_PIN_AND_SOCKET_CONNECTORS (PDF, English)</a></li> </ul> <p><b>Product Specifications:</b></p> <ul style="list-style-type: none"> <li>• None Available</li> </ul> <p><b>Application Specifications:</b></p> <ul style="list-style-type: none"> <li>• None Available</li> </ul> <p><b>Instruction Sheets:</b></p> <ul style="list-style-type: none"> <li>• <a href="#">AMP* 160 POSITION SERIES "M" CONNECTOR AND ACCESSORIES (PDF, English)</a></li> </ul> <p><b>CAD Files: (CAD Format &amp; Compression Information)</b></p> <ul style="list-style-type: none"> <li>• <a href="#">2D Drawing (DXF, Version H)</a></li> <li>• <a href="#">3D Model (IGES, Version H)</a></li> <li>• <a href="#">3D Model (STEP, Version H)</a></li> </ul> <p style="text-align: right;"><a href="#">List all Documents</a></p>	<p><b>Additional Information:</b></p> <ul style="list-style-type: none"> <li>• <a href="#">Product Line Information</a></li> </ul> <p><b>Related Products:</b></p> <ul style="list-style-type: none"> <li>• <a href="#">Tooling</a></li> </ul>

Product Features (Please use the Product Drawing for all design activity)	
<p><b>Product Type Features:</b></p> <ul style="list-style-type: none"> <li>• Product Series = M Series</li> <li>• Product Type = Connector</li> <li>• Connector Type = Housing</li> <li>• Thread Size = 0.25-28</li> <li>• Strain Relief = Without</li> <li>• Sealed = No</li> </ul> <p><b>Mechanical Attachment:</b></p> <ul style="list-style-type: none"> <li>• Mating Retention Type = Center Fastener</li> <li>• Panel Mount Retention = With</li> <li>• <a href="#">Mounting Hardware</a> = Jackscrew Socket</li> <li>• Panel Mount Retention Type = Screw Mount</li> </ul> <p><b>Dimensions:</b></p> <ul style="list-style-type: none"> <li>• Length (X-Axis) (mm [in]) = 28.32 [1.115]</li> <li>• Width (Z-Axis) (mm [in]) = 46.38 [1.826]</li> <li>• Profile Height (Y-Axis) (mm [in]) = 69.85 [2.750]</li> </ul> <p><b>Body Features:</b></p> <ul style="list-style-type: none"> <li>• Mating Retention = With</li> <li>• Fastener Type = Slotted Hex</li> </ul> <p><b>Contact Features:</b></p> <ul style="list-style-type: none"> <li>• Contact Type = Socket</li> </ul> <p><b>Housing Features:</b></p> <ul style="list-style-type: none"> <li>• Connector Style = Receptacle</li> </ul>	<p><b>Configuration Features:</b></p> <ul style="list-style-type: none"> <li>• Number of Positions = 160</li> </ul> <p><b>Industry Standards:</b></p> <ul style="list-style-type: none"> <li>• <a href="#">RoHS/ELV Compliance</a> = RoHS compliant, ELV compliant</li> <li>• <a href="#">Lead Free Solder Processes</a> = Wave solder capable to 240°C, Wave solder capable to 260°C, Wave solder capable to 265°C</li> <li>• RoHS/ELV Compliance History = Always was RoHS compliant</li> </ul> <p><b>Environmental:</b></p> <ul style="list-style-type: none"> <li>• Operating Temperature (°C [°F]) = -65 - +125 [-85 - +257]</li> </ul> <p><b>Conditions for Usage:</b></p> <ul style="list-style-type: none"> <li>• Applies To = Panel, Wire/Cable</li> <li>• For Use With = Plug Block 202799</li> </ul> <p><b>Operation/Application:</b></p> <ul style="list-style-type: none"> <li>• Application Use = Cable-to-Cable / Cable-to-Panel</li> </ul> <p><b>Packaging Features:</b></p> <ul style="list-style-type: none"> <li>• Packaging Method = Box/Carton</li> <li>• Packaging Quantity = 1</li> </ul> <p><b>Other:</b></p> <ul style="list-style-type: none"> <li>• Brand = AMP</li> <li>• Comment = Pins and/or sockets may be used in any housing.; Housing accepts type II, type III+ and Subminiature Coaxicon contacts.; Housing cavity identification are mirror image.</li> </ul>

- [Housing Material](#) = Diallyl Phthalate
- [Housing Color](#) = Blue
- [Mating Alignment](#) = With
- [Mating Alignment Type](#) = Guide Hole
- [UL Flammability Rating](#) = UL 94V-0

---

### Corporate Information

- [About TE](#)
- [Investors](#)
- [News Room](#)
- [Supplier Portal](#)
- [Careers](#)
- [Terms & Conditions](#)
- [Privacy Policy](#)

### Quick Links

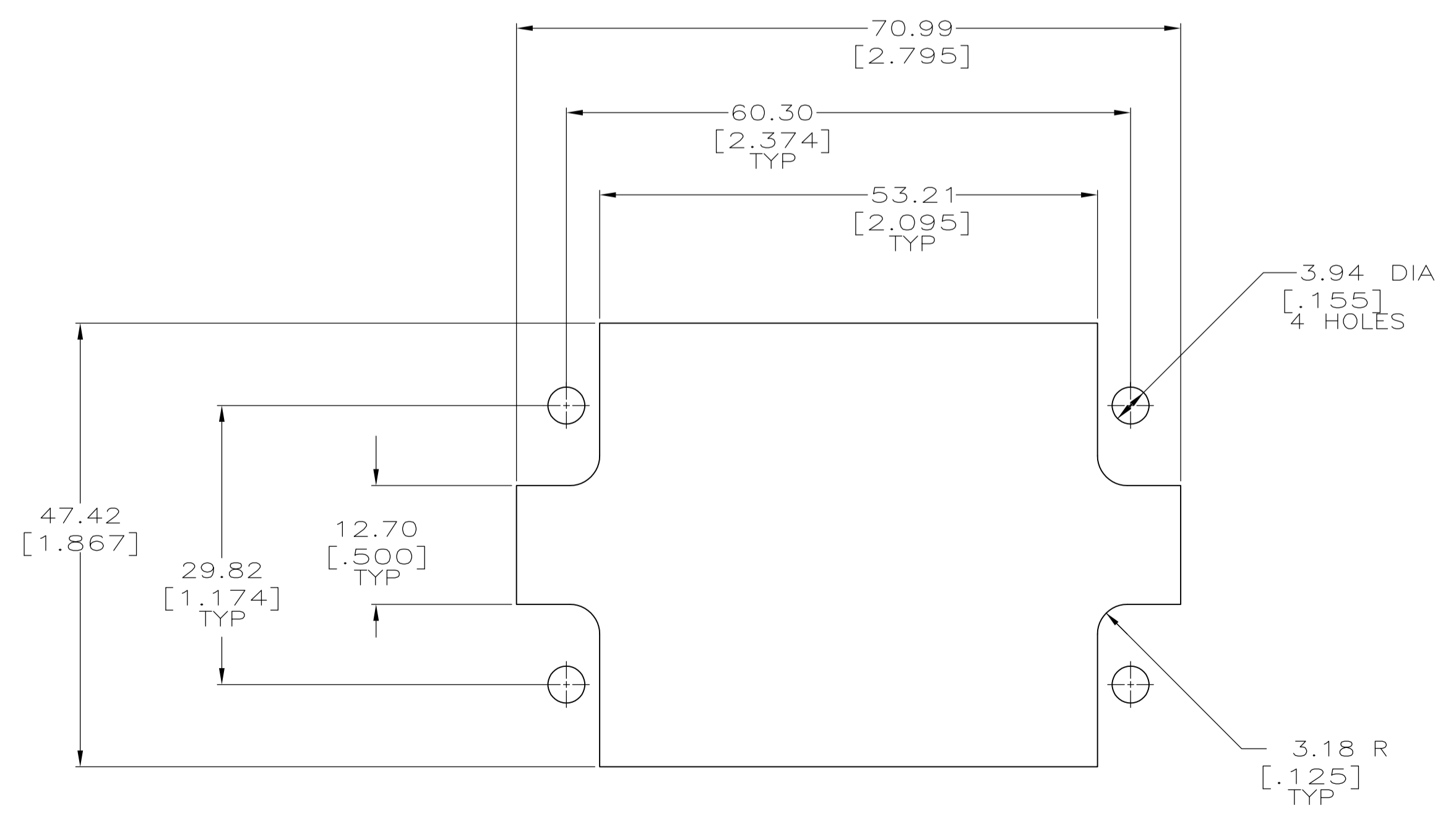
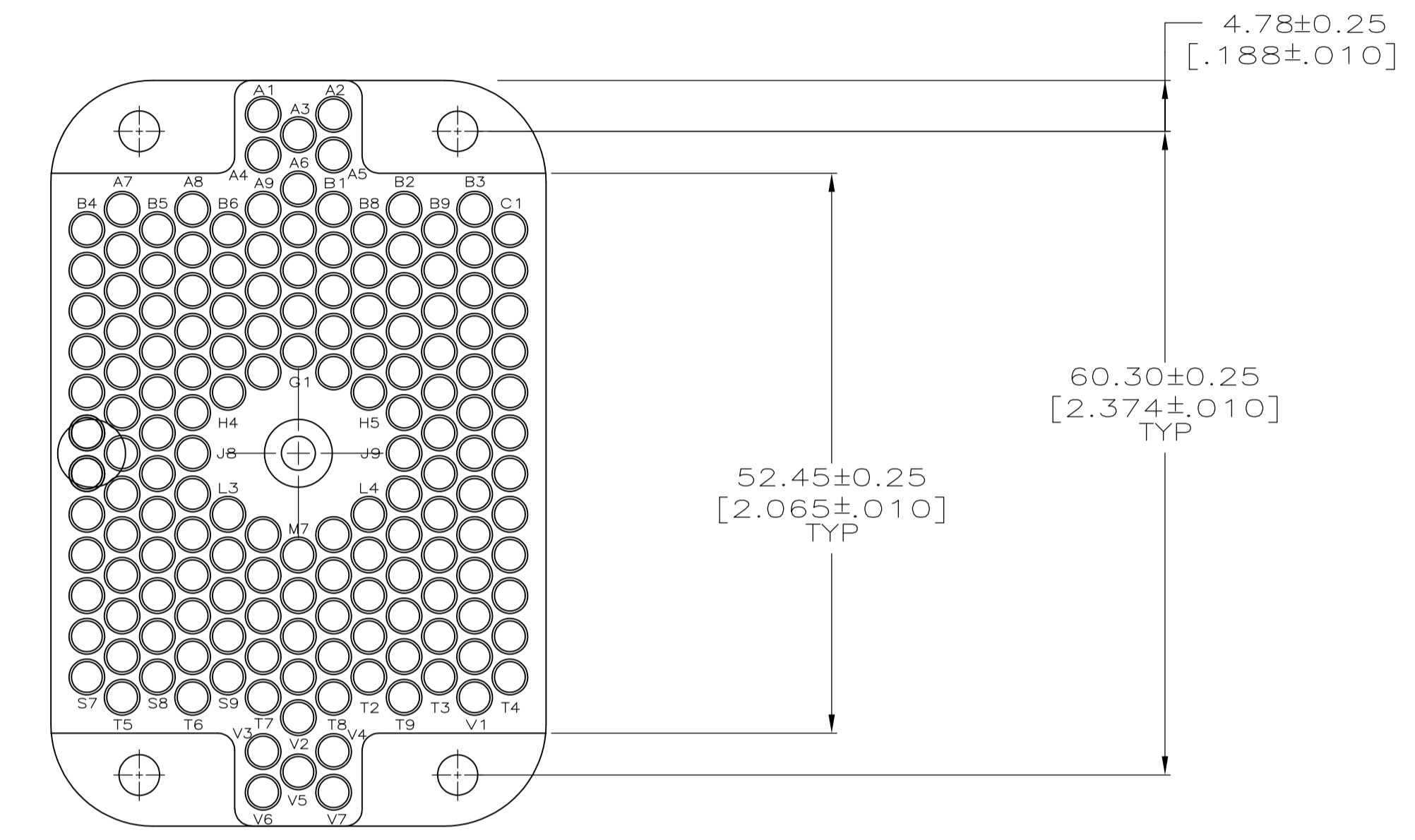
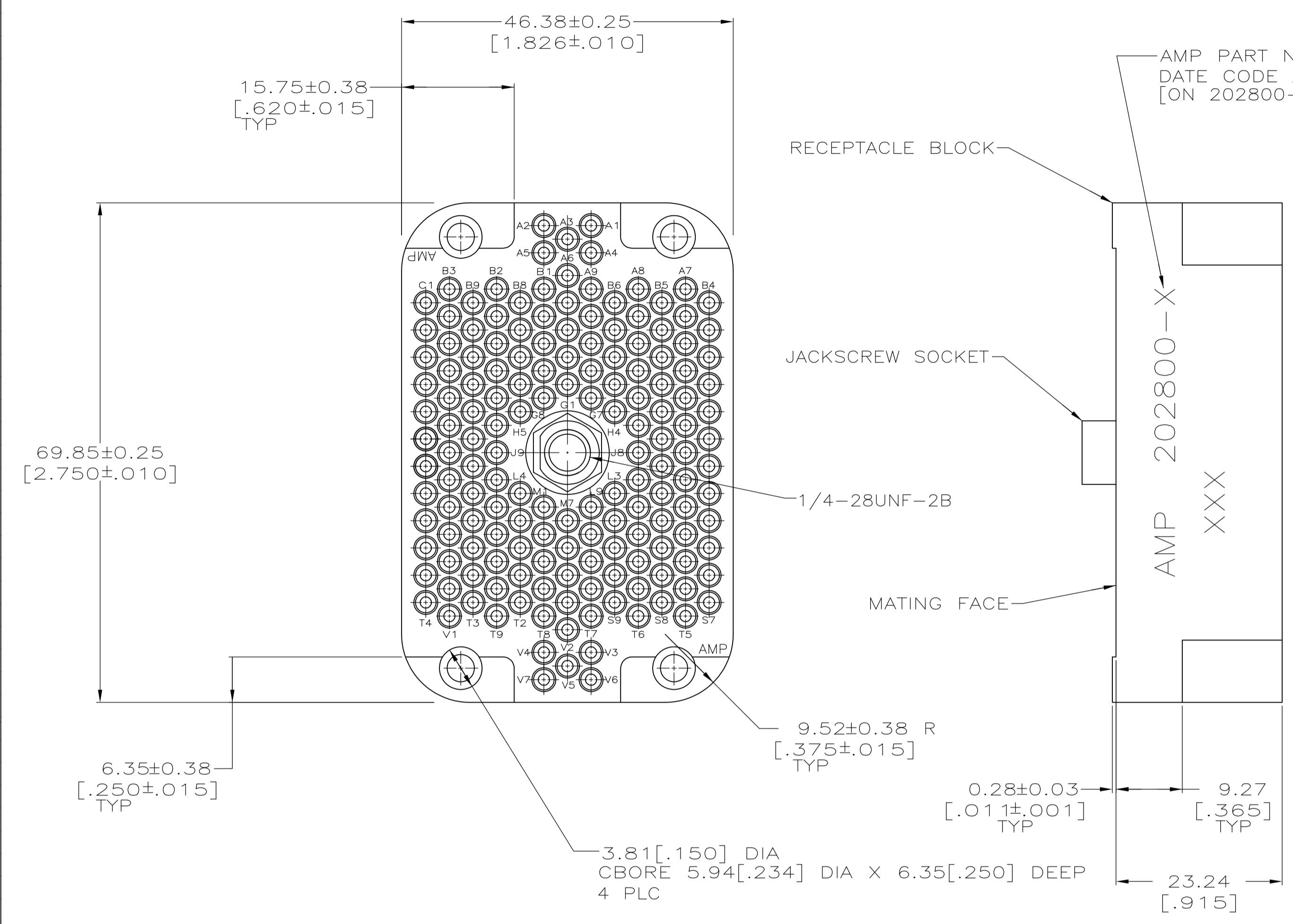
- [Distributor Inventory](#)
- [Product Cross Reference](#)
- [Documents & Drawings](#)
- [Product Compliance Support Center](#)
- [Site Map](#)

### Customer Support

- [Email or Chat With Us](#)
- [Find a Phone Number](#)
- [Knowledge Base](#)
- [Manage Your Account](#)

### Keep Me Informed





RECOMMENDED PANEL CUTOUT

SUPERSEDED BY 202800-2	PHENOLIC	BLACK	202800-6
SUPERSEDED BY 202800-1	DIALLYL PHTHALATE	BLUE	202800-5
	PHENOLIC	BLACK	202800-2
	DIALLYL PHTHALATE	BLUE	202800-1
	MATERIAL	COLOR	PART NO
	RECEPTACLE BLOCK		

- 1 THIS ASSEMBLY MATES WITH 202799.
- 2 JACKSCREW SOCKET; STAINLESS STEEL; RECEPTACLE BLOCK; SEE TABLE.

THIS DRAWING IS A CONTROLLED DOCUMENT.		DIN C. OBERMAN 09/17/92	Tyco Electronics Corporation Harrisburg, PA 17105-3608	
DIMENSIONS: mm[INCHES]		CHK R. STONE 9-21-92	NAME R. KLINE 9-22-92	
TOLERANCES UNLESS OTHERWISE SPECIFIED:		APPLICATION SPEC		
0 PLC ± -		RESTRICTED TO		
1 PLC ± -		SIZE CAGE CODE DRAWING NO		
2 PLC ± 0.13 [.005]		WEIGHT		
3 PLC ± -		A1 00779 C=202800		
4 PLC ± -		CUSTOMER DRAWING		
ANGLES ± -		SCALE 2:1 SHEET 1 OF 1 REV J		