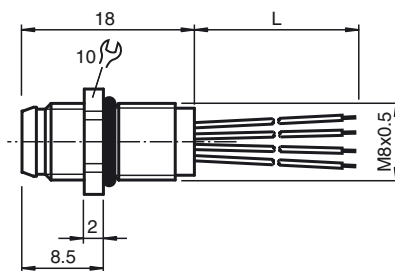




**Dimensions**



**Model Number**

**V3S-M8-500**

3-pin M8 receptacle

**Features**

- Front/screw mounting
- Halogen-free stranded wires
- Degree of protection IP67

**Technical data**

**General specifications**

Number of pins	3
Connection 1	Male connector
Construction type 1	straight
Threading 1	M8
Connection 2	cable end

**Electrical specifications**

Operating voltage	$U_B$	max. 60 V DC
Operating current		max. 4 A
Volume resistance		< 3 mΩ

**Ambient conditions**

Ambient temperature	-25 ... 85 °C (-13 ... 185 °F)
Pollution Degree	3

**Mechanical specifications**

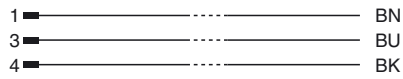
Pin diameter	1 mm
Degree of protection	IP67
Connection	Tinned copper single leads, Ø1.15 ±0.07 mm
Material	
Contacts	Cu alloy
Contact surface	Au
Connector	brass, nickel-plated
Seal	Viton
Core insulation	TPE
Cable	
Cores	3 x 0.25 mm <sup>2</sup>
Conductor construction	14 x 0.15 mm Ø
Length	L 500 mm
Installation	Front mounting M8

**Electrical connection**

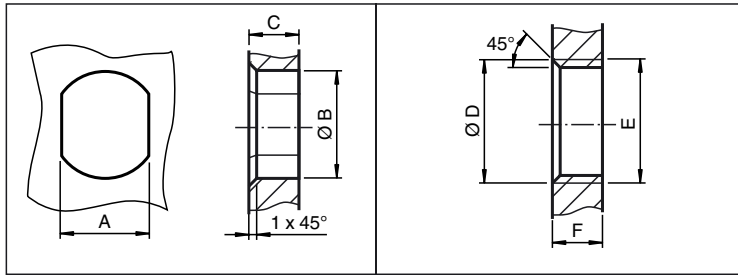


Release date: 2014-10-06 11:01 Date of issue: 2014-10-06 456943\_eng.xml

**Electrical connection**



**Installation Note**



	A	B	C	D	E	F
M8	7.1 <sup>+0.1</sup>	Ø 8.2 <sup>+0.1</sup>	2 - 4 mm	-	M8x0.5	2 - 4 mm
M12	11 <sup>+0.1</sup>	Ø 12.2 <sup>+0.1</sup>	< 4 mm	-	M12x1	< 4.5 mm
M16	13.5 <sup>+0.1</sup>	Ø 16.1	< 4.5 mm	Ø 17 <sup>+0.2</sup>	M16x1.5	> 2.5 mm
M20	13.5 <sup>+0.1</sup>	Ø 20.1	-	Ø 20 <sup>+0.2</sup>	M20x1.5	< 6 mm
PG9	13.5 <sup>+0.1</sup>	Ø 15.3 <sup>+0.1</sup>	< 4.5 mm	Ø 16	PG9	> 2.5 mm
PG13.5	18.8 <sup>+0.1</sup>	Ø 20.5 <sup>+0.1</sup>	-	Ø 22 <sup>±0.1</sup>	PG13.5	-

Release date: 2014-10-06 11:01 Date of issue: 2014-10-06 456943\_eng.xml