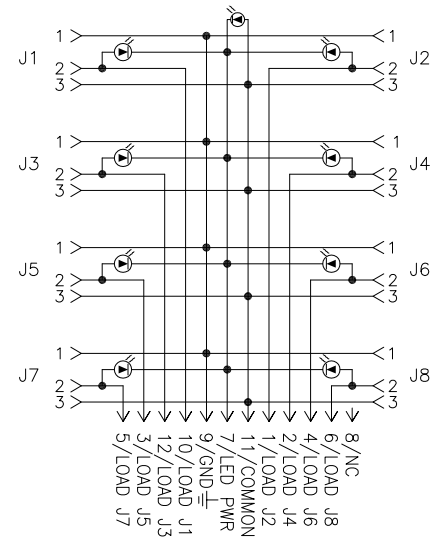
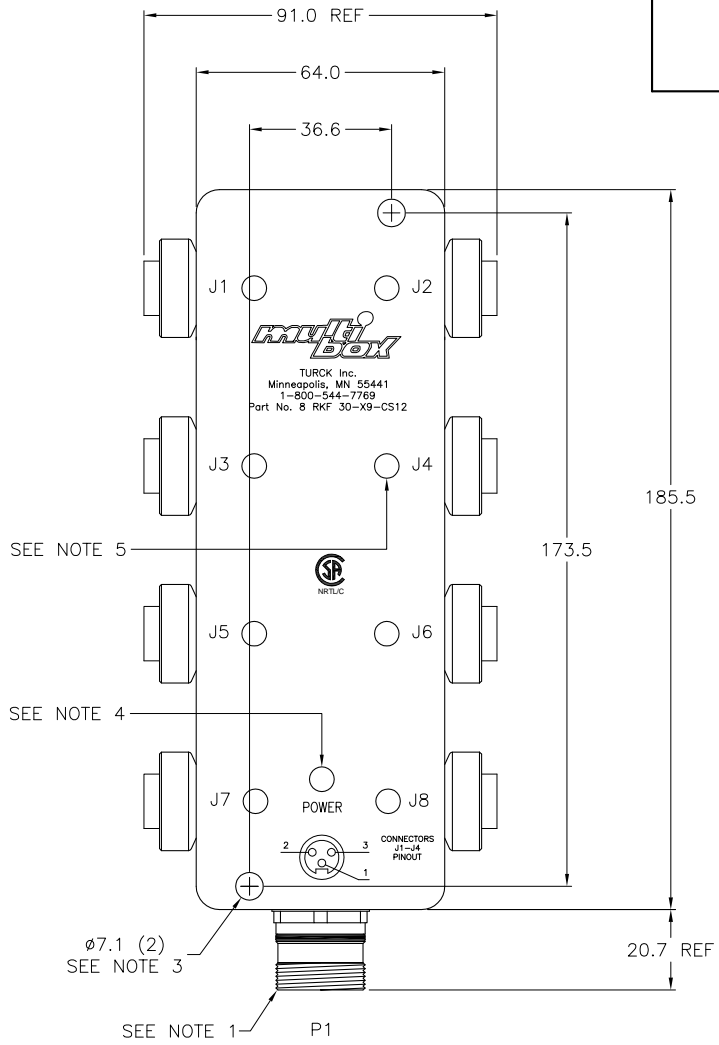


SPECIFICATIONS	
HOUSING MATERIAL	ALUMINUM ALLOY
HOUSING FINISH/COLOR	EPOXY/BLACK
RECEPTACLE HOUSING	NICKEL-PLATED BRASS
CONTACT CARRIERS	TPU
CONTACTS	GOLD PLATED BRASS
OPERATING VOLTAGE	40 VAC-120 VAC
OPERATING CURRENT	4.0 A Per PORT, 7 A TOTAL
PROTECTION CLASS to DIN 40050	IP 67 ONLY WHEN ALL RECEPTACLES ARE COVERED WITH PLUGS OR CONNECTED
OPERATING TEMPERATURE	-30°C to 80°C (-22°F to 176°F)



ELECTRICAL CIRCUIT DIAGRAM

- NOTES:**
1. USE MATING CORDSET CKBM 12-11-*, (* = CABLE LENGTH IN METERS)
 2. BOX HEIGHT IS 34.5 mm NOMINAL.
 3. CLEARANCE HOLE FOR 1/4-20 MOUNTING SCREWS (NOT SUPPLIED).
 4. GREEN LED POWER INPUT TO MODULE WHEN LIT.
 5. YELLOW LED (8). CIRCUIT IS ENERGIZED WHEN LIT.
 6. AT 24 VAC THE LEDS MAY NOT BE AS BRIGHT AS NORMAL.

RELATED DOCUMENTS 1. 2. 3. 4.	3RD ANGLE PROJECTION 	THIS DRAWING IS PROPERTY OF TURCK INC. USE OF THIS DOCUMENT WITHOUT WRITTEN PERMISSION IS PROHIBITED.		3000 CAMPUS DRIVE MINNEAPOLIS, MN 55441 1-800-544-7769 (763) 553-7300 (763) 553-0708 fax turck.com	
	MATERIAL	DRFT IK	DATE 03/12/99	DESCRIPTION 8 RKF 30-X9-CS12	
FINISH	ALL DIMENSIONS DISPLAYED ON THIS DRAWING ARE FOR REFERENCE ONLY	DSGN	SCALE 1=2.0	IDENTIFICATION NO. U2900-1	
	CONTACT TURCK FOR MORE INFORMATION	UNIT OF MEASUREMENT MILLIMETERS		REV C	
C	DRAWING PROCESSED AS PART OF ECO 33971	CBM	04/07/11	33971	
REV	DESCRIPTION	BY	DATE	ECO NO.	DO NOT SCALE THIS DRAWING
					FILE: U2900-1
					SHEET 1 OF 1