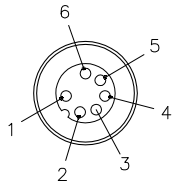


MALE END VIEW

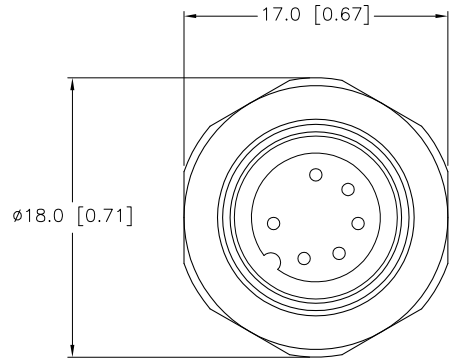


- 1 = BROWN
- 2 = WHITE
- 3 = BLUE
- 4 = BLACK
- 5 = GRAY
- 6 = PINK

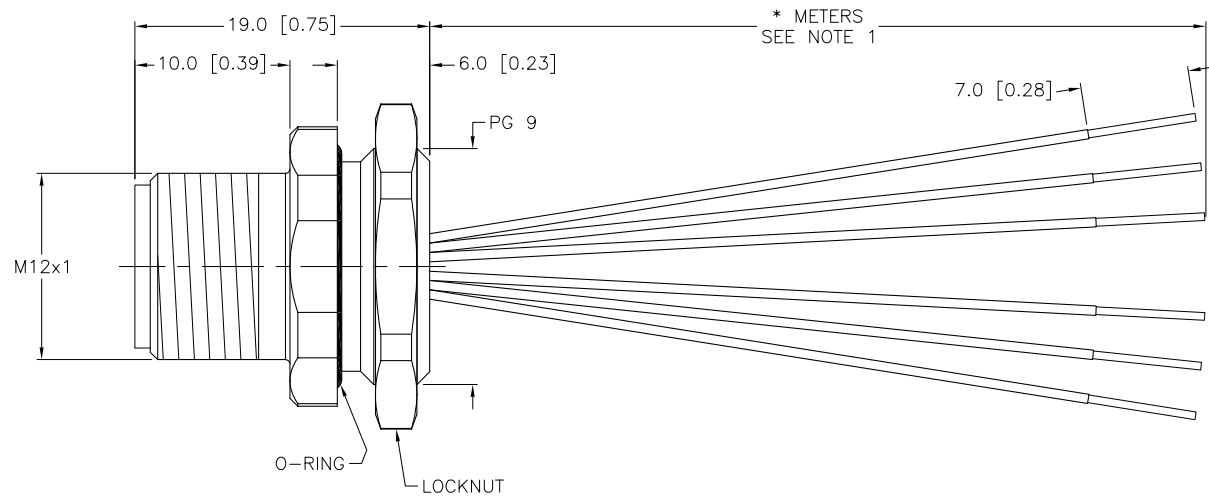


SPECIFICATIONS

|                                  |                                   |
|----------------------------------|-----------------------------------|
| CONTACT CARRIER MATERIAL         | NYLON OR TPU                      |
| CONTACT MATERIAL/PLATING         | BRASS/GOLD                        |
| HOUSING/LOCKNUT MATERIAL/PLATING | BRASS/NICKEL                      |
| O-RING MATERIAL                  | BUNA-N                            |
| RATED CURRENT [A]                | 2.0 A                             |
| RATED VOLTAGE [V]                | 60 VAC/75 VDC                     |
| CONDUCTOR INSULATION MATERIAL    | PVC                               |
| NUMBER OF CONDUCTORS [AWG]       | 6x24 AWG                          |
| TEMPERATURE RANGE                | -40°C to +105°C (-40°F to +221°F) |
| PROTECTION CLASS                 | MEETS NEMA 1,3,4,6P AND IEC IP68  |



END VIEW  
LOCKNUT REMOVED



\* METERS  
SEE NOTE 1

| CABLE LENGTH | TOLERANCE                                                                   |
|--------------|-----------------------------------------------------------------------------|
| ALL LENGTHS  | + 4% (OR 50mm) OF LENGTH<br>- 0% (OR 0mm) OF LENGTH<br>WHICHEVER IS GREATER |
| STRIP LENGTH | TOLERANCE                                                                   |
| 0-7mm        | ±0.5mm                                                                      |
| 8-29mm       | ±1.0mm                                                                      |
| 30-49mm      | ±2.0mm                                                                      |
| 50-69mm      | ±3.0mm                                                                      |
| 70-100mm     | ±4.0mm                                                                      |
| OVER 100mm   | ±5.0mm                                                                      |

NOTES:

1. "\*" INDICATES LEAD LENGTH IN METERS. CONTACT TURCK TO ORDER SPECIFIC LENGTHS.

SOURCE DRAWING - FOR REFERENCE ONLY

|                                           |                                                                 |                                                                                                       |               |                                                                                                                   |  |
|-------------------------------------------|-----------------------------------------------------------------|-------------------------------------------------------------------------------------------------------|---------------|-------------------------------------------------------------------------------------------------------------------|--|
| RELATED DOCUMENTS<br>1.<br>2.<br>3.<br>4. | 3RD ANGLE PROJECTION<br>                                        | THIS DRAWING IS PROPERTY OF TURCK INC. USE OF THIS DOCUMENT WITHOUT WRITTEN PERMISSION IS PROHIBITED. |               | 3000 CAMPUS DRIVE<br>MINNEAPOLIS, MN 55441<br>1-800-544-7769<br>(763) 553-7300<br>(763) 553-0708 fax<br>turck.com |  |
|                                           | MATERIAL<br>SEE SPECIFICATIONS                                  | DRFT RWC                                                                                              | DATE 04/07/10 | DESCRIPTION<br>FS 6-*                                                                                             |  |
| FINISH<br>SEE SPECIFICATIONS              | ALL DIMENSIONS DISPLAYED ON THIS DRAWING ARE FOR REFERENCE ONLY | DSGN                                                                                                  | SCALE 1=.5    | IDENTIFICATION NO.                                                                                                |  |
| CONTACT TURCK FOR MORE INFORMATION        |                                                                 | UNIT OF MEASUREMENT<br><b>MILLIMETER [ INCH ]</b>                                                     |               | REV<br>B                                                                                                          |  |
| DO NOT SCALE THIS DRAWING                 |                                                                 | FILE: 777003689                                                                                       |               | SHEET 1 OF 1                                                                                                      |  |

|     |                                        |     |          |         |
|-----|----------------------------------------|-----|----------|---------|
| B   | DRAWING PROCESSED AS PART OF ECO 33971 | CBM | 04/06/11 | 33971   |
| REV | DESCRIPTION                            | BY  | DATE     | ECO NO. |