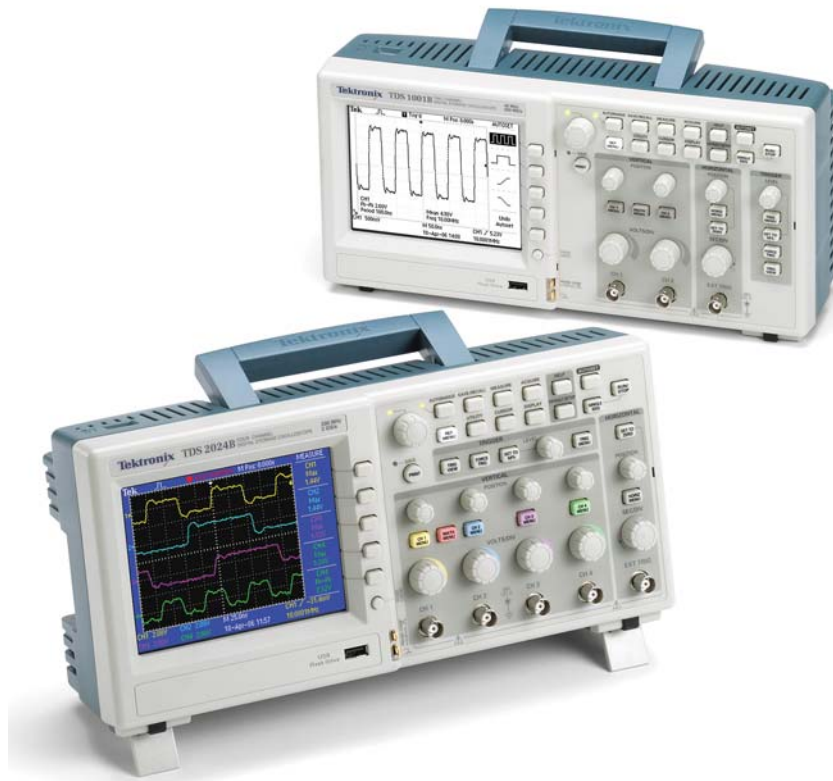


Digital Storage Oscilloscopes

► TDS1000B Series • TDS2000B Series



TDS1000B and TDS2000B Series Oscilloscopes

Instantly Productive. Incredibly Easy.

The TDS1000B and TDS2000B Series digital storage oscilloscopes deliver an unbeatable combination of performance and ease-of-use at a price you can afford.

Affordable Digital Precision

With up to 200 MHz bandwidth and 2 GS/s maximum sample rate, no other color digital storage oscilloscope offers as much bandwidth and sample rate for the price. The TDS1000B and TDS2000B Series oscilloscopes provide accurate real-time acquisition up to their full bandwidth, the same record length at all time base settings, advanced triggers to isolate signals of interest, and 11 standard automatic measurements on all models. Their Fast Fourier Transform (FFT) and waveform add, subtract, and multiply math functions allow you to analyze, characterize and troubleshoot circuits.

Quick and Easy Waveform Capture

The simple user interface with classic analog-style controls makes these instruments easy to use, reducing learning time and increasing efficiency. Innovative features such as the Autoset Menu, Probe Check Wizard, Context-Sensitive Help Menu and color LCD display (TDS2000B Series) optimize instrument setup and operation.

Flexible Data Transfer

With USB host and device ports which enable removable data storage, seamless PC connectivity, and direct printing, no other color or monochrome digital storage oscilloscope offers as much flexibility and ease of data transfer for the price.

► Features & Benefits

40 MHz, 60 MHz, 100 MHz and 200 MHz Bandwidths

Sample Rates up to 2 GS/s Real Time

2 or 4 Channels

Color or Monochrome LCD Display

Removable Data Storage via Front Panel USB Port

Seamless PC Connectivity via USB Device Port, with OpenChoice® and NI SignalExpress® PC Software

Advanced Triggers Including Pulse Width Trigger and Line-selectable Video Trigger

FFT Standard on All Models

11 Automatic Measurements

Multiple Language User Interface and Context-sensitive Help

Direct Print to all PictBridge® Compatible Printers via USB Device Port

Lifetime Warranty*¹

► Applications

Design and Debug

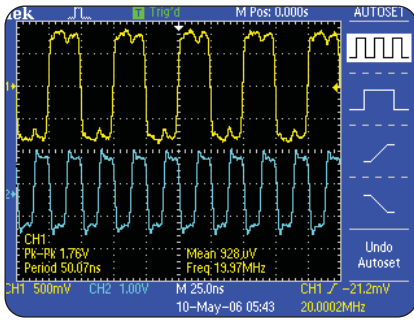
Education and Training

Manufacturing Test and Quality Control

Service and Repair

Digital Storage Oscilloscopes

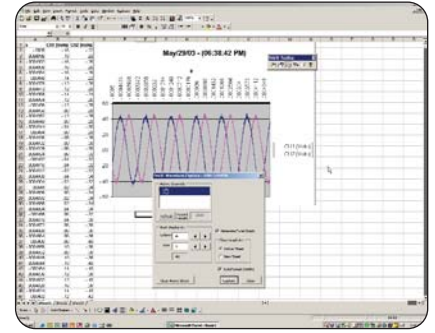
► TDS1000B Series • TDS2000B Series



► Quickly and easily capture waveforms.



► Conveniently use your USB flash drive to store screen shots and waveform data.



► Easily capture, save and analyze measurement results with OpenChoice® PC Communications Software.

Simple Documentation and Analysis

Easily capture, save and analyze measurement results with OpenChoice® PC Communications Software. Simply pull screen images and waveform data into the stand-alone desktop application or directly into Microsoft Word and Excel. To complement OpenChoice, National

Instruments SignalExpress Tektronix Edition Software provides you with extended capabilities, including advanced analysis, remote oscilloscope control and live waveform analysis. Alternatively, if you prefer not to use the PC, you can simply print your image directly to any PictBridge compatible printer via the USB device port.

Performance You Can Count On

Depend on Tektronix to provide you with performance you can count on. In addition to industry leading service and support, every TDS1000B and TDS2000B Series oscilloscope comes backed with a Lifetime Warranty¹ as standard.

► Characteristics

► TDS1000B and TDS2000B Series Digital Storage Oscilloscopes

	TDS1001B	TDS1002B	TDS1012B	TDS2002B	TDS2004B	TDS2012B	TDS2014B	TDS2022B	TDS2024B
Display (1/4 VGA LCD)	Mono	Mono	Mono	Color	Color	Color	Color	Color	Color
Bandwidth* ²	40 MHz	60 MHz	100 MHz	60 MHz	60 MHz	100 MHz	100 MHz	200 MHz	200 MHz
Channels	2	2	2	2	4	2	4	2	4
External Trigger Input	Included on all models								
Sample Rate on each channel	500 MS/s	1.0 GS/s	1.0 GS/s	1.0 GS/s	1.0 GS/s	1.0 GS/s	1.0 GS/s	2.0 GS/s	2.0 GS/s
Record Length	2.5 K points at all time-bases on all models								
Vertical Resolution	8-Bits								
Vertical Sensitivity	2 mV to 5 V/div on all models with calibrated fine adjustment								

² Bandwidth is 20 MHz at 2 mV/div, all models.

▶ TDS1000B and TDS2000B Series Digital Storage Oscilloscopes (continued)

	TDS1001B	TDS1002B	TDS1012B	TDS2002B	TDS2004B	TDS2012B	TDS2014B	TDS2022B	TDS2024B
DC Vertical Accuracy	+3% on all models								
Vertical Zoom	Vertically expand or compress a live or stopped waveform								
Maximum Input Voltage	300V _{RMS} CAT II; derated at 20 dB/decade above 100 kHz to 13V _{pk-pk} AC at 3 MHz								
Position Range	2 mV to 200 mV/div +2 V; >200 mV to 5 V/div +50 V								
Bandwidth Limit	20 MHz for all models								
Input Coupling	AC, DC, GND on all models								
Input Impedance	1 MΩ in parallel with 20pF								
Time Base Range	5 ns to 50 sec/div	5 ns to 50 sec/div	5 ns to 50 sec/div	5 ns to 50 sec/div	5 ns to 50 sec/div	5 ns to 50 sec/div	5 ns to 50 sec/div	2.5 ns to 50 sec/div	2.5 ns to 50 sec/div
Time Base Accuracy	50 ppm								
Horizontal Zoom	Horizontally expand or compress a live or stopped waveform								
I/O Interfaces									
USB Ports	Included on all models: 2 USB 2.0 Ports USB host port on front panel supports USB flash drives USB device port on back of instrument supports connection to PC and all PictBridge compatible printers								
GPIB	Optional								
Non-volatile Storage									
Reference Waveform Display	(2) 2.5 K point reference waveforms								
Waveform Storage w/o USB Flash Drive	(2) 2.5 K point	(2) 2.5 K point	(2) 2.5 K point	(2) 2.5 K point	(4) 2.5 K point	(2) 2.5 K point	(4) 2.5 K point	(2) 2.5 K point	(4) 2.5 K point
Waveform Storage with USB Flash Drive	96 or more reference waveforms per 8 MB								
Setups w/o USB Flash Drive	10 front panel setups								
Setups with USB Flash Drive	4000 or more front panel setups per 8 MB								
Screen Images with USB Flash Drive	128 or more screen images per 8 MB (the number of images depends on file format selected)								
Save All with USB Flash Drive	12 or more Save All operations per 8 MB A single Save All operation creates 3 to 9 files (setup, image, plus one file for each displayed waveform)								

Digital Storage Oscilloscopes

► TDS1000B Series • TDS2000B Series

Acquisition Modes

Peak Detect –

High frequency and random glitch capture. Captures glitches as narrow as 12 ns (typical) using acquisition hardware at all time base settings from 5 μ s/div to 50 s/div.

Sample – Sample data only.

Average –

Waveform averaged, selectable: 4, 16, 64, 128.

Single Sequence –

Use the Single Sequence button to capture a single triggered acquisition sequence at a time.

Roll Mode –

At acquisition time base settings of >100 ms/div.

Trigger System

Trigger Modes – Auto, Normal, Single Sequence.

Trigger Types

Edge (Rising/Falling) –

Conventional level-driven trigger. Positive or negative slope on any channel. Coupling selections: AC, DC, Noise Reject, HF Reject, LF Reject.

Video –

Trigger on all lines or individual lines, odd/even or all fields from composite video, or broadcast standards (NTSC, PAL, SECAM).

Pulse Width (or Glitch) –

Trigger on a pulse width less than, greater than, equal to, or not equal to, a selectable time limit ranging from 33 ns to 10 s.

Trigger Source

2-channel Models – CH1, CH2, Ext, Ext/5, AC Line.

4-channel Models –

CH1, CH2, CH3, CH4, Ext, Ext/5, AC Line.

Trigger View

Displays trigger signal while trigger view button is depressed.

Trigger Signal Frequency Readout

Provides a frequency readout of the trigger source.

Cursors

Types – Amplitude, Time.

Measurements – [Δ]T, 1[Δ]T (frequency), [Δ]V.

► Autoset Menu

Single-button, automatic setup of all channels for vertical, horizontal and trigger systems, with undo Autoset.

Signal Type	Autoset Menu Choices
Square Wave	Single-cycle, Multi-cycle, Rising or Falling Edge
Sine Wave	Single-cycle, Multi-cycle, FFT Spectrum
Video (NTSC, PAL, SECAM)	Field: All, Odd or Even Line: All or Selectable Line Number

Automatic Waveform Measurements

Period, Frequency, +Width, –Width, Rise Time, Fall Time, Max, Min, Peak-to-Peak, Mean, Cycle RMS.

Waveform Math

Operators – Add, Subtract, Multiply, FFT.

FFT –

Windows, Hanning, Flat Top, Rectangular, 2048 sample points.

Sources –

2-channel Models: CH1 to CH2, CH2 to CH1, CH1+CH2, CH1xCH2.

4-channel Models: CH1 to CH2, CH2 to CH1, CH3 to CH4, CH4 to CH3, CH1+CH2, CH3+CH4, CH1xCH2, CH3xCH4.

Autorange

Automatically adjust vertical and/or horizontal oscilloscope settings when probe is moved from point to point, or when the signal exhibits large changes.

Display Characteristics

Display –

Color models: ¼ VGA passive color LCD with color on black background with adjustable multi-level contrast. Monochrome models: ¼ VGA backlit passive LCD with adjustable multi-level contrast and inverse video selectable from front panel.

Interpolation – Sin(x)/x.

Display Types – Dots, vectors.

Persistence – Off, 1 s, 2 s, 5 s, infinite.

Format – YT and XY.

Environmental and Safety

Temperature –

Operating: 0 °C to +50 °C.

Non-operating: –40 °C to +71 °C.

Humidity –

Operating and Non-operating: Up to 80% RH at or below +40 °C. Operating and Non-operating: Up to 45% RH up to +50 °C.

Altitude –

Operating and Non-operating: Up to 3,000 m.

Electromagnetic Compatibility –

Meets Directive 89/336/EEC, amended by 93/68/EEC, meets or exceed EN55011 Class A Radiated and Conducted Emissions; FCC 47 CFR, Part 15, Subpart B, Class A; Australian EMC Framework, demonstrated per Emission Standard AS/NZS 2064; Russian GOST EMC regulations.

Safety –

UL610100-1:2003, CSA22.2 No. 61010-1:2003, EN61010-1:2001, IEC61010-1:2001.

Physical Characteristics

Instrument Dimensions	mm	in.
Width	326.3	12.85
Height	158.0	6.22
Depth	124.2	4.89
Weight	kg	lbs.
Instrument only	2.0	4.4
With accessories	2.2	4.9

Instrument Shipping

Package Dimensions	mm	in.
Width	476.2	18.75
Height	266.7	10.5
Depth	228.6	9

RM2000B Rackmount	mm	in.
Width	482.6	19
Height	177.8	7
Depth	108	4.25

► Ordering Information

TDS1001B: 40 MHz, 2 Ch, 500 MS/s, Monochrome DSO.

TDS1002B: 60 MHz, 2 Ch, 1 GS/s, Monochrome DSO.

TDS1012B: 100 MHz, 2 Ch, 1 GS/s, Monochrome DSO.

TDS2002B: 60 MHz, 2 Ch, 1 GS/s, Color DSO.

TDS2004B: 60 MHz, 4 Ch, 1 GS/s, Color DSO.

TDS2012B: 100 MHz, 2 Ch, 1 GS/s, Color DSO.

TDS2014B: 100 MHz, 4 Ch, 1 GS/s, Color DSO.

TDS2022B: 200 MHz, 2 Ch, 2 GS/s, Color DSO.

TDS2024B: 200 MHz, 4 Ch, 2 GS/s, Color DSO.

Standard Accessories

P2220 – 200 MHz 10x to 1x Switchable Passive Probes (one per channel).

Power Cord – Please specify plug option.

NIM/NIST – Traceable Certificate of Calibration.

Documentation – User Manual (Please specify preferred language option).

OpenChoice® PC Communications Software – Enables fast and easy communication between a Windows PC and the TDS1000B and TDS2000B Series via USB. Transfer and save settings, waveforms, measurements and screen images.

National Instruments SignalExpress Tektronix Edition Interactive Measurement Software – Base Version – A fully interactive measurement software environment optimized for the TDS1000B and TDS2000B Series. Enables you to instantly acquire, generate, analyze, compare, import and save measurement data and signals using intuitive drag-and-drop user interface that does not require any programming. Standard TDS1000B and TDS2000B Series support for acquiring, controlling, viewing and exporting your live signal. A 30-day trial period of the Professional Version provides additional signal processing, advance analysis, mixed signal, sweeping, limit testing and user-defined step capabilities. Order SIGEXPTE for permanent Professional Version capability.

Limited Lifetime Warranty*¹ – Covering labor and parts for defects in materials and workmanship for a minimum of 10 years, excluding probes and accessories.²

¹ Lifetime is defined as five years after Tektronix discontinues manufacturing the product, but the warranty length shall be at least ten years from date of original purchase. Lifetime warranty is non-transferable, proof of original purchase is required. Limitations apply. For terms and conditions visit

² Probes and accessories are not covered by the oscilloscope warranty and Service Offerings. Refer to the datasheet of each probe and accessory model for its unique warranty and calibration terms.

International Power Plugs

Opt. A0 – North America power.

Opt. A1 – Universal Euro power.

Opt. A2 – United Kingdom power.

Opt. A3 – Australia power.

Opt. A5 – Switzerland power.

Opt. A6 – Japan power.

Opt. A10 – China power.

Opt. A11 – India power.

Opt. A99 – No power cord or AC adapter.

User Manual Options

Opt. L0 – English manual.

Opt. L1 – French manual.

Opt. L2 – Italian manual.

Opt. L3 – German manual.

Opt. L4 – Spanish manual.

Opt. L5 – Japanese manual.

Opt. L6 – Portuguese manual.

Opt. L7 – Simplified Chinese manual.

Opt. L8 – Standard Chinese manual.

Opt. L9 – Korean manual.

Opt. L10 – Russian manual.

Translated front panel overlays included with their respective user manuals.

Recommended Accessories

TEK-USB-488 – GPIB-to-USB converter.

SIGEXPTE – National Instruments SignalExpress Tektronix Edition Interactive Measurement Software – Professional Version.

AC2100 – Soft carrying case for instrument.

HCTEK4321 – Hard plastic carrying case for instrument (requires AC2100).

RM2000B – Rackmount kit.

071-1075-xx – Programmer Manual – English only.

071-1828-xx – Service Manual – English only.

TNGTDS01 – Operator Training Kit – Extensive instructions and step-by-step lab exercises provide education about the operation of TDS1000B and TDS2000B Series oscilloscopes. Kit includes self-paced CD-ROM based manual and signal source board.

174-4401-00 – USB host-to-device cable, 3 feet long.

Recommended Probes

P2220 – 10x to 1x Switchable Passive Probe (200 MHz when 10x is selected).

P6101B – 1X passive probe (15 MHz, 300 V_{RMS} CAT II rating).

P6015A – 1000X high-voltage passive probe (75 MHz).

P5100 – 100X high-voltage passive probe (75 MHz).

P5200 – High-voltage active differential probe (25 MHz).

P6021 – 15 A, 60 MHz AC current probe.

P6022 – 6 A, 120 MHz AC current probe.

A621 – 2000 A, 5 to 50 kHz AC current probe.

A622 – 100 A, 100 kHz AC/DC current probe.

TCP303/TCPA300 – 15 A, 15 MHz AC/DC current probe/amplifier.

TCP305/TCPA300 – 50 A, 50 MHz AC/DC current probe/amplifier.

TCP312/TCPA300 – 30 A, 100 MHz AC/DC current probe/amplifier.

TCP404XL/TCPA400 – 500 A, 2 MHz AC/DC current probe/amplifier.

Service Options*²

Opt. C3 – Calibration Service 3 years.

Opt. C5 – Calibration Service 5 years.

Opt. D1 – Calibration Data Report.

Opt. D3 – Calibration Data Report 3 years (with Opt. C3).

Opt. D5 – Calibration Data Report 5 years (with Opt. C5).

Opt. CA1 – Provides a single calibration event or coverage for the designated calibration interval, whichever comes first.

Service Offerings (Available After Purchase)

TDSxxxxB-CA1 – Provides a single calibration event or coverage for the designated calibration interval, whichever comes first.

