

---

## MULTI-FUNCTION MODULES



Primary Power Components Division

[AC Receptacles Cross Reference](#)

[International Connector Specification Listin](#)

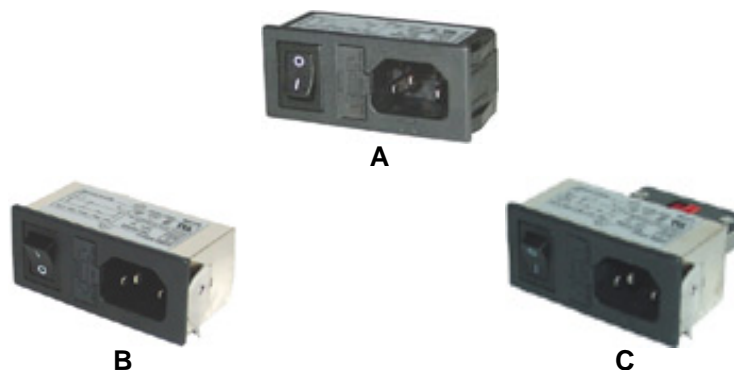
RoHS  
Compliant

---

## Single Fuseholder Modules IEC320 - C14

Max Rating:

UL 6A/115VAC<sup>(1)</sup>, 10A/250VAC<sup>(2)</sup>, 15A/250VAC<sup>(3)</sup>  
 CSA 4A/250VAC<sup>(4)</sup>, 5A/250VAC<sup>(5)</sup>, 6A/250VAC<sup>(6)</sup>, 10A/250VAC<sup>(7)</sup>  
 VDE 10A/250VAC<sup>(8)</sup>



Multi-Function Modules. Both snap-in and screw mount incorporates an IEC male power inlet, fuseholder and optional voltage selector and power switch.

Part Number		Description	Housing Type	Terminals	Fuseholder Type	Power Switch	Voltage Selector	Fig.
761-18/003 <sup>(1)(6)(8)</sup>		Snap-In Mount	Plastic	Solder Tab	5 x 20	SPST	--	A**
761-18/004 <sup>(1)(4)(8)</sup>		Snap-In Mount	Plastic	Solder Tab	5 x 20	DPST	--	A**
762-18/002 <sup>(1)(6)(8)</sup>		Snap-In Mount	Metal	.250 Q.D.	5 x 20	SPST	--	B**
762-18/003 <sup>(1)(4)(8)</sup>		Snap-In Mount	Metal	.250 Q.D.	5 x 20	DPST	--	B**
762-18/004 <sup>(1)(5)(8)</sup>		Snap-In Mount	Metal	.250 Q.D.	5 x 20	SPST	Rear	C**
762-18/005 <sup>(1)(4)(8)</sup>		Snap-In Mount	Metal	.250 Q.D.	5 x 20	DPST	Rear	C**

\* UL & CSA Only Panel Thickness: 1.0 - 1.6 mm.

\*\*Panel Thickness 1.0 - 1.8 mm.

## Double Fuseholder Modules IEC320 - C14

Max Rating:

UL 6A/115VAC<sup>(1)</sup>, 10A/250VAC<sup>(2)</sup>, 15A/250VAC<sup>(3)</sup>  
CSA 4A/250VAC<sup>(4)</sup>, 5A/250VAC<sup>(5)</sup>, 6A/250VAC<sup>(6)</sup>, 10A/250VAC<sup>(7)</sup>  
VDE 10A/250VAC<sup>(8)</sup>



D



E



F

Multi-Function Modules. Both snap-in and screw mount incorporates an IEC male power inlet, fuseholder and optional voltage selector and power switch.

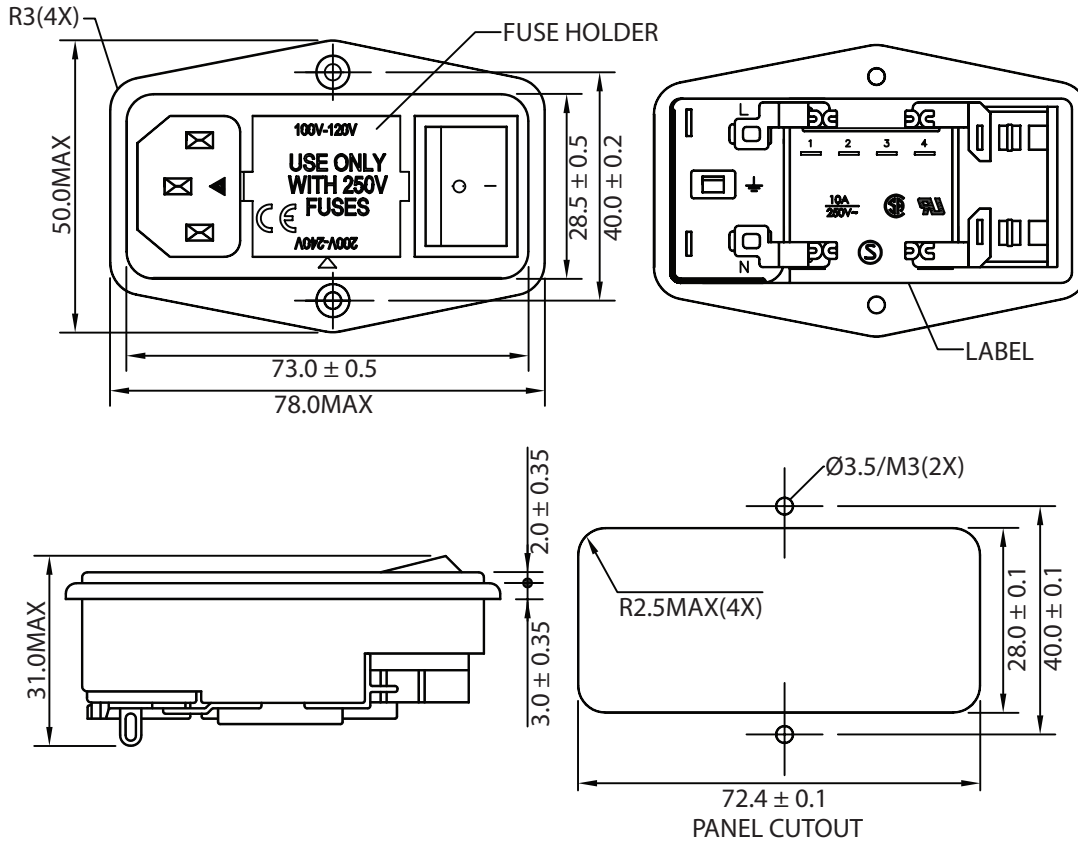
Part Number	PDF Drawings	Description	Housing Type	Terminals	Fuseholder Type	Power Switch	Voltage Selector	Figure
763-00/001(2)(6)(8)		Screw Mount	Plastic	Solder Tab	*	DPST	Front	D*
764-00/002(2)(7)(8)		Screw Mount	Plastic	Solder Tab	5 x 20	DPST	Front	E
764-00/003(2)(7)(8)		Screw Mount	Plastic	Solder Tab	5 x 20	DPST	Front	F

\* Fuseholder for 5x20 mm (EURO) or 6.3 x 32 mm (North American Type).

THESE DRAWINGS ARE THE PROPERTY OF QUALTEK ELECTRONICS AND NOT TO BE REPRODUCED FOR OR COMMUNICATED TO A THIRD PARTY WITHOUT THE EXPRESS WRITTEN PERMISSION OF AN OFFICER OF QUALTEK ELECTRONICS.

REVISION			
REV.	DESCRIPTION		APPROVED
B	RoHS Compliancy		DP
C	Updated Specifications		DP
D	Graphics Update		DP

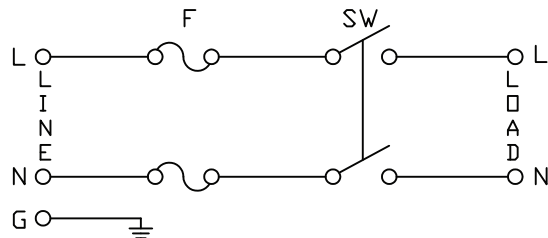
MECHANICAL DIMENSIONS:



ELECTRICAL CHARACTERISTICS:

- 1-1. VOLTAGE RATING.....250VAC
- 1-2. CURRENT RATING
  - A. @ 250 VAC (UL,CSA, SEMKO).....10 A RMS MAX
- 1-3. HIPOT RATING (FOR ONE MINUTE)
  - A. LINE TO GROUND ..... 2000V AC
  - B. LINE TO LINE .....2000V AC
- 1-4. MINIMUM INSULATION RESISTANCE: @ 500V DC
  - A. LINE & NEUTRAL TO GROUND ..... 100M OHM
  - B. LINE TO NEUTRAL ..... 100M OHM
- 1-5. AMBIENT TEMPERAUTRE ..... 25° C
- 1-6. OPERATING TEMPERATURE..... -25° C TO +85° C
- 1-7. DOUBLE 5X20mm FUSEHOLDER, PLASTIC CASE
- 1-8. SOLDER TAB TERMINALS
- 1-9. FLAMMABILITY CLASS UL94V-0
- 1-10. APPROVALS: UL, CSA, SEMKO
- 1-11. RoHS COMPLIANT

ELECTRICAL SCHEMATIC:



**CONTROLLED**

Dim range (mm)	Tolerance +/- (mm)	Qualtek Electronics Corp. PPC DIVISION		
		Part Number: 764-00/002	RoHS Compliant	
0-1	0.15	Description: MULTI-FUNCTION MODULE		
1-6	0.20			
6-18	0.30	UNIT: in		
18-50	0.50			
50-120	0.70	Drawn / Date	Checked / Date	Approved / Date
120-250	0.90	B.Zhang		
250-500	1.20			