



➔ **Product Type**
Heavy Action Pushbutton Switch

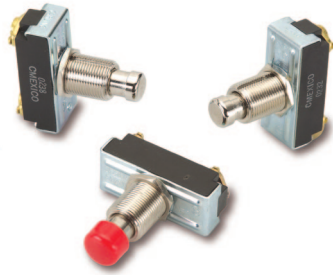
➔ **Product Series**
170/172-Series

The 170/172-Series pushbutton switches are single pole, high amperage switches suitable for shallow back panel applications. These single throw momentary action switches have a slow-make, slow-break contact mechanism. They require a 2.5 pounds actuation force, and are AC rated up to 15 amps at 125VAC.

Certifications	UL CSA
Number of Poles	1 pole
Ratings	10A 250VAC
	15A 125VAC
Dielectric Strength	1,000 V RMS (minimum)

Insulation Resistance	100 megohms (minimum)
Base Material	Phenolic
Actuator Style	Nickel Plated Pushbutton
Actuator Material	Brass/Nickel Plate
Bushing Material	Brass/Nickel Plate
Terminal Options	Solder Lugs Wire Leads
Mounting Method	Bushing Mount
Mounting Hole Dimensions	.500" diameter; 12.70mm diameter
Value Added	Bushing accessories available Plastic color caps available Custom lead lengths available Custom strip lengths available

170/172-Series Pushbutton Switches



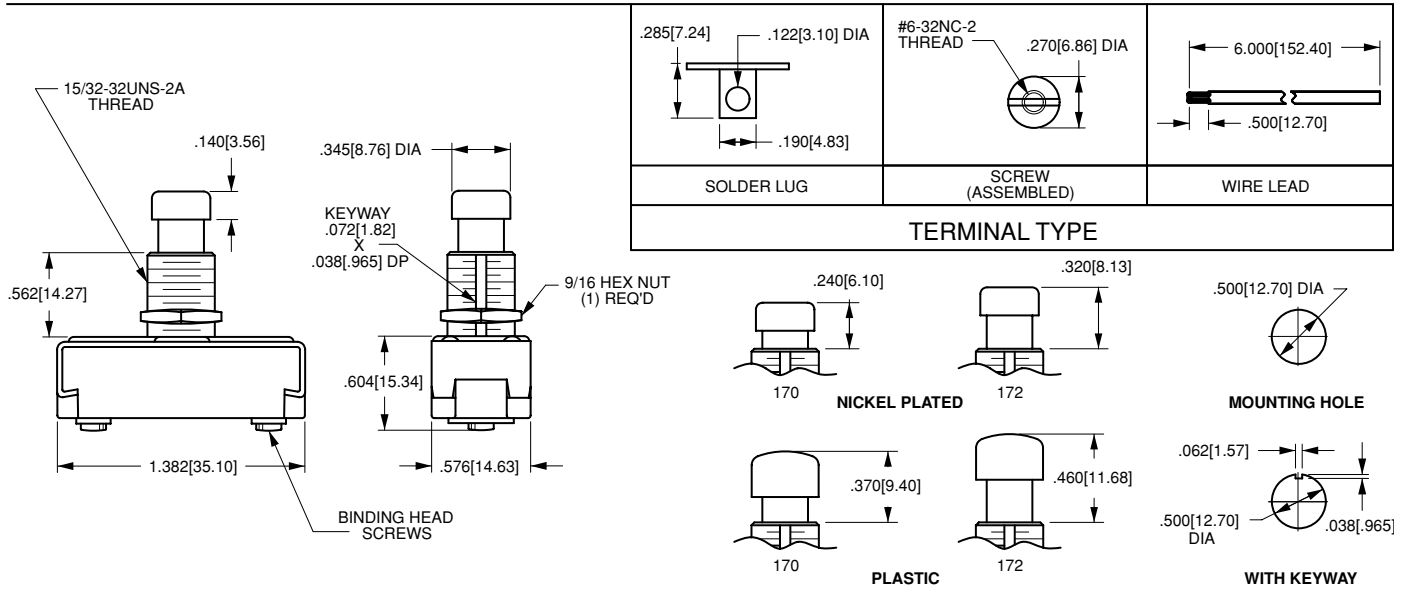
The 170/172-Series pushbutton switches are single pole, high amperage switches suitable for shallow back panel applications. These switches are momentary action and require an actuation force of 2.5 lbs. The 170/172-Series switches are equipped with a slow-make, slow-break contact mechanism and are rated at 15 amps at 125VAC.

Dielectric Strength
UL/CSA: 1000V - live to dead metal parts

Electrical Life
25,000 cycles- momentary

Mechanical Life
100,000 cycles

Operating Temperature
32°F to 185°F (0°C to +85°C)



172 - CBL

¹ Base Part Number ² Cap Style/Color

1 BASE PART NUMBER: SERIES/POLES/CIRCUITRY/RATING/ TERMINATION			
<i>Single Pole</i> 10A 250VAC; 15A 125VAC	solder lugs	wire leads	screw terminals
ON-(OFF) ²	170-B	170-A	170
OFF-(ON) ²	172-B	172-A	172

2 CAP STYLE/COLOR ¹	
CBL	black plastic
CGN	green plastic
CRD	red plastic
CWH	white plastic

NOTES
 1 When selection 2 is left blank, a standard nickel plated plunger is supplied.
 () Indicates momentary function.